



Solenoid valve 2/2 way N.C. Combined operation

21IH3K1B150-XS
÷
21IH8K1B400-SXS

PRESENTATION:

Combined operation S.V. for interception of fluids compatible with the construction materials. Components are degreased and silicone free. Minimum operational pressure is not required. The materials used and the tests carried out ensure maximum reliability and duration.

USE: Automation - Heating - Chemistry

PIPES: G 3/8 - G 1 1/2

COIL:

8W - Ø 13	
BDA - BSA	155°C (class F)
BDV	180°C (class H)
12W - Ø 13	
UDA	155°C (class F)
14W - Ø 13	
GDA - GDS	155°C (class F)
GDH - GDV	180°C (class H)

**COIL HOUSING AND COIL FORMER MATERIAL ARE
MADE BY 100% VIRGIN MATERIAL.**

Gaskets	Temperatura		Medium
BXS = NBR Silicone free	- 10°C	+ 90°C	Air, inert gas, water
EXS=EPDM Silicone free	- 10°C	+140°C	Water, steam
VXS =FKM Silicone free	- 10°C	+140°C	Mineral oils (2°E),gasoline gas oil, fuel oils (7°E)

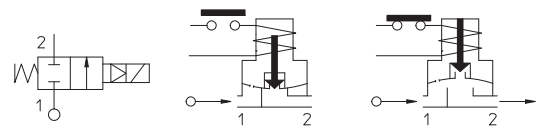
For seals other than NBR replace the letter "B" with the ones corresponding to the other seals. E.I. 21IH3K1V150-XS.



Max. allowable pressure (PS) 16 bar

Ambient temperature:

See coils catalogue page for its compatibility.



Pipe ISO 228/1	Codice	Max viscosity		Ø mm	Kv l/mn	Power watt	Pressure		
		cSt	°E				min bar	M.O.P.D.	
G 3/8	21IH3K1B150-XS	12	~ 2	15	40	8	0	14	6
						12		-	14
G 1/2	21IH4K1B160-XS			16	50	8		14	6
						12		-	14
G 3/4	21IH5K1B200-XS			20	60	8		14	6
						12		-	14
G 1	21IH6K1B250-XS			25	140	8		14	3
						12		-	8
								-	14
								14	-
G 1 1/4	21IH7K1B350-XS	12	~ 2	35	300	14	0	-	7
	21IH7K1B350-SXS				250			-	7
				40	320			14	-
					250			-	7
G 1 1/2	21IH8K1B400-XS				320			14	-
	21IH8K1B400-SXS				250			-	7

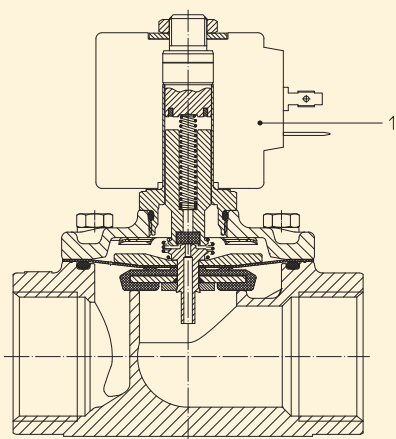
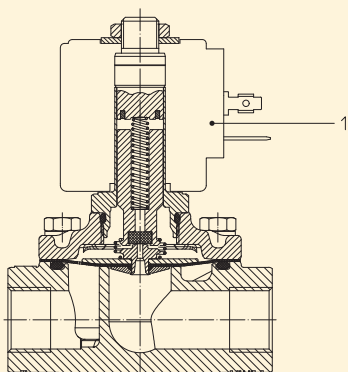


CE Approval

(Pressure Equipment Directive 97/23/CE)
for S.V. 21IH7÷21IH8...SXS

Note Available on request and with minimum quantities.

The "ODE" reserves the right to carry out technical and aesthetic modifications without prior notice.



MATERIALS:

Body
Armature tube
Fixed core
Plunger
Phase displacement ring
Spring
Seal

Stainless steel AISI 316
 Stainless steel AISI 316
 Stainless steel AISI series 400
 Stainless steel AISI series 400
 Gold plated copper
 Stainless steel AISI series 300
 Standard: BXS=NBR
 On request: VXS=FKM EXS=EPDM
 Stainless steel AISI 316

Orificie

On request:

Connector

Pg 9 o Pg 11

Connector conformity

ISO 4400

FEATURES:

Electrical conformity

IEC 335

Protection degree

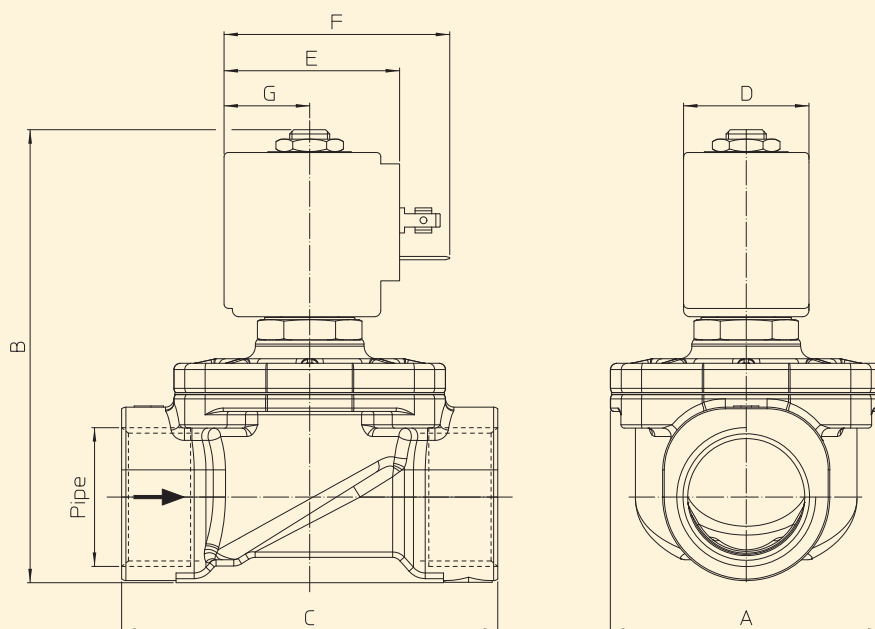
IP 65 EN 60529 (DIN 40050)
 with coil fitted by connector.

SPARE PARTS:

1. Coil:

See coils list

DIMENSIONS:



Tipo	Raccordo ISO 228/1	A mm	B mm	C mm
21IH3K1B150-XS	G 3/8	52	92	68
21IH4K1B160-XS	G 1/2			
21IH5K1B200-XS	G 3/4	58	100	75
21IH6K1B250-XS	G 1	65	109	90
21IH7K1B350-XS	G 1 1/4	94	126	128
21IH7K1B350-SXS				
21IH8K1B400-XS	G 1 1/2			
21IH8K1B400-SXS				

BOBINA TIPO	POTENZA			DIMENSIONI			
	W ---	Esercizio VA ~	Allo spunto VA ~	D mm	E mm	F mm	G mm
B	8	14,5	25	30	42	54	20,5
U	12	23	35	36	48	60	23,5
G	14	27	43	52	55	67	25