

# Series XLVK

## ISO 15552

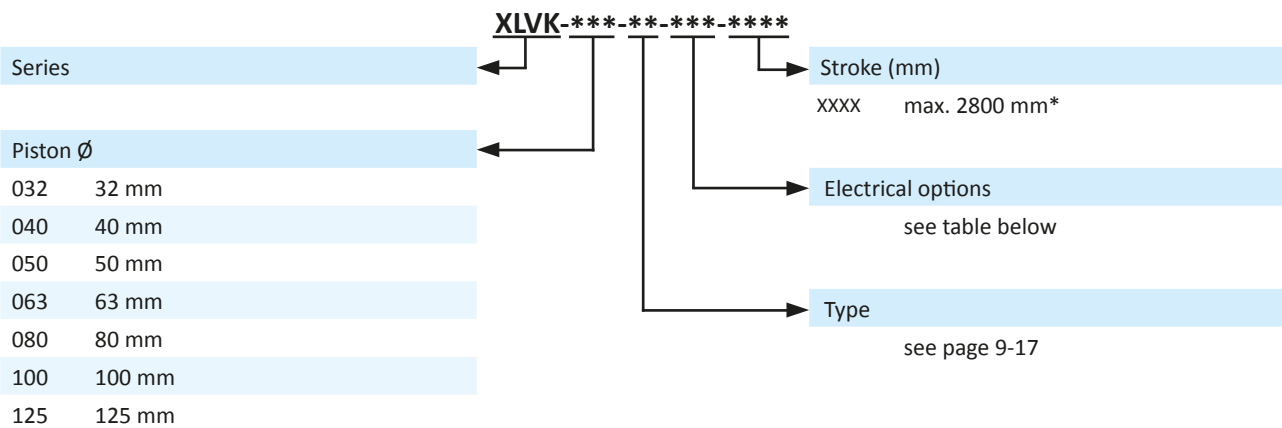
### Technical details

Series cylinder	XL
Series valve	KM-09 (up to $\varnothing$ 63 mm), KM-10 (up from $\varnothing$ 80 mm)
Operating pressure	3 ... 10 bar
Temperature range	-10°C ... +70°C
Max. stroke	2800 mm
Medium	Filtered, oil-free and dried compressed air according to ISO 8573-1:2010, Class 7:2:4, instrument air, free of aggressive additives. Alternatively the pressure dew point must be at least 10°C below lowest occurring ambient temperature.
Protection	IP 65 according to EN 60529



Double acting Al-profile cylinder with integrated sensor grooves, adjustable cushions and magnetic piston for proximity sensors. The sensors can be installed directly into the sensor grooves of the Al-profile. The cylinder includes a 5/2- or 5/3-way valve with a high flow rate and compact dimensions. Standard stroke lengths in table below, additional lengths on request.

### Order code



\* For longer stroke lengths please check the max buckling load.

### Electrical options

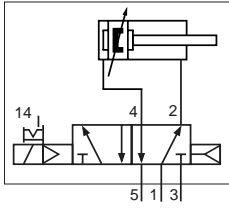
Nominal voltage	Power consumption	Specifics	Plug connection <sup>*1</sup>	-XXX Manual override on same side of ports	
				2 and 4	1, 3 and 5
12 V DC	4.2 W		Form B industrial norm	-441	-411
12 V DC	2.2 W	max. 8 bar	Form B industrial norm	-461	-431
24 V DC	4.2 W		Form B industrial norm	-442	-412
24 V DC	4.8 W		M 12	-042	-012
24 V DC	2.2 W	max. 8 bar	Form B industrial norm	-462	-432
24 V DC	2.5 W	max. 8 bar	M 12	-062	-032
24 V AC	7/4 VA		Form B industrial norm	-452	-422
115 V AC	7/4 VA		Form B industrial norm	-456	-426
230 V AC	7/4 VA		Form B industrial norm	-457	-427

\*1 Plug socket not included, suitable plug sockets see page 4-38.

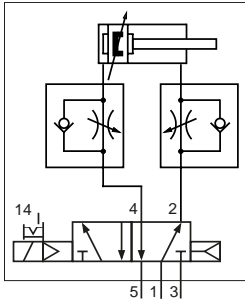


**Types**

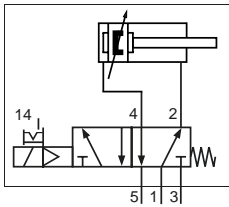
**single solenoid valve, normally retracted**



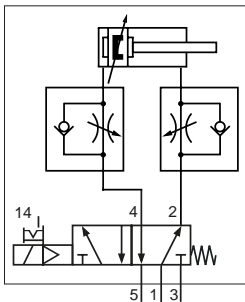
- 01** valve with air spring return, cylinder piston rod steel hard chrome plated
- 03** valve with air spring return, cylinder piston rod stainless steel



- 05** valve with air spring return, cylinder piston rod steel hard chrome plated, with mounted flow controls
- 07** valve with air spring return, cylinder piston rod stainless steel, with mounted flow controls

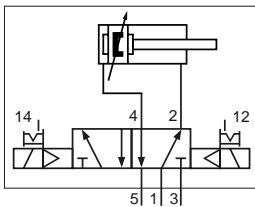


- 02** valve with mechanical spring return, cylinder piston rod steel hard chrome plated
- 04** valve with mechanical spring return, cylinder piston rod stainless steel

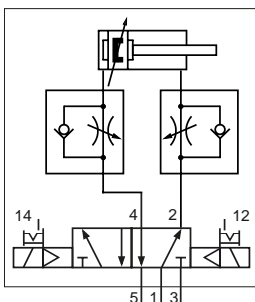


- 06** valve with mechanical spring return, cylinder piston rod steel hard chrome plated, with mounted flow controls
- 08** valve with mechanical spring return, cylinder piston rod stainless steel, with mounted flow controls

**double solenoid valve**

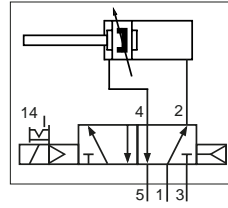


- 20** cylinder piston rod steel hard chrome plated
- 21** cylinder piston rod stainless steel

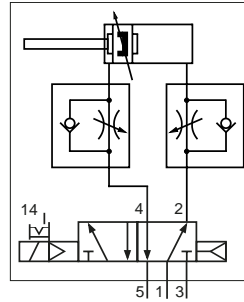


- 22** cylinder piston rod steel hard chrome plated, with mounted flow controls
- 23** cylinder piston rod stainless steel, with mounted flow controls

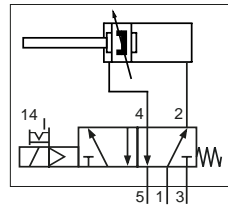
**single solenoid valve, normally extended**



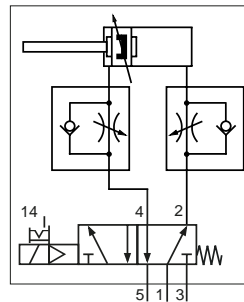
- 10** valve with air spring return, cylinder piston rod steel hard chrome plated
- 12** valve with air spring return, cylinder piston rod stainless steel



- 15** valve with air spring return, cylinder piston rod steel hard chrome plated, with mounted flow controls
- 17** valve with air spring return, cylinder piston rod stainless steel, with mounted flow controls

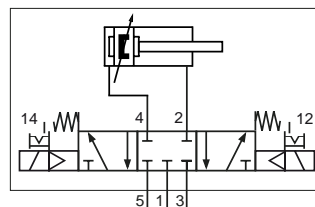


- 11** valve with mechanical spring return, cylinder piston rod steel hard chrome plated
- 13** valve with mechanical spring return, cylinder piston rod stainless steel

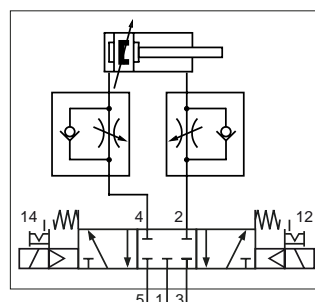


- 16** valve with mechanical spring return, cylinder piston rod steel hard chrome plated, with mounted flow controls
- 18** valve with mechanical spring return, cylinder piston rod stainless steel, with mounted flow controls

**5/3-way, center position closed**



- 25** cylinder piston rod steel hard chrome plated
- 26** cylinder piston rod stainless steel

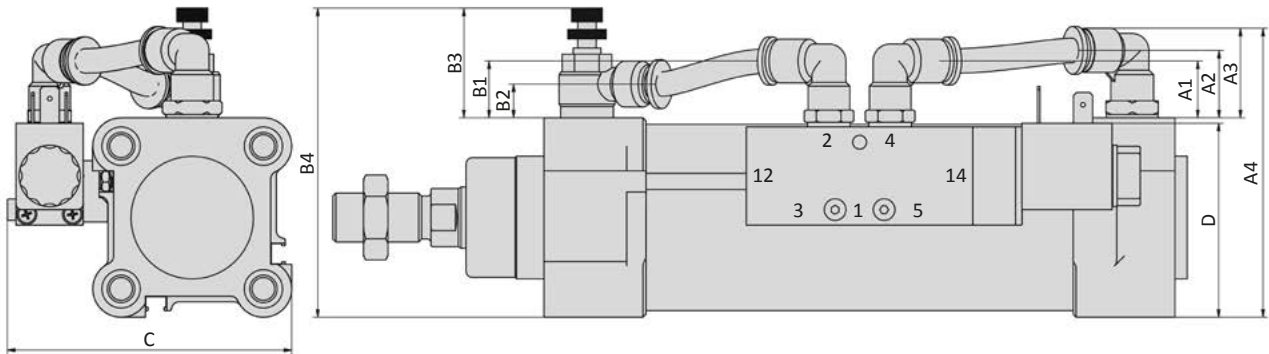


- 27** cylinder piston rod steel hard chrome plated, with mounted flow controls
- 28** cylinder piston rod stainless steel, with mounted flow controls

# Series XLVK

ISO 15552

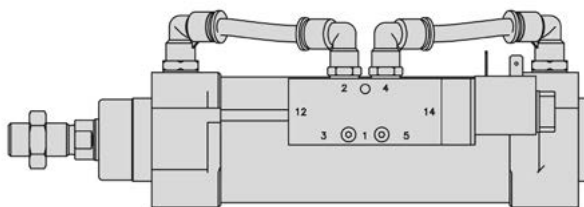
## Dimensions



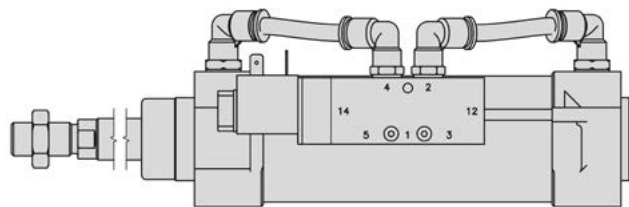
Piston $\varnothing$	A1	A2	A3	A4	B1	B2	B3 <sub>max</sub>	B4 <sub>max</sub>	C	D
32	20	21	28.5	76.5	20	9.5	34.5	81.5	76.5	47.7
40	18.8	22	29.5	83.5	18.8	11	39.5	93.5	83.3	52.5
50	18.6	22	29.5	94.5	18.6	11	39.5	102.5	92.9	63.3
63	24	18.9	31.5	106.5	24	11.4	44	118	106.5	78.9
80	22.8	18.9	30	124	26.4	13	44	137.5	132.9	86.5
100	35.4	25.8	45	156	35.4	14.5	49.5	159.5	151.8	112.5
125	26.3	25.3	36	175	16.3	14	49.5	187.5	178.4	131.4*

\*versions with flow controls D = 121.4

### single solenoid valve, normally retracted



### single solenoid valve, normally extended



### double solenoid valve, 5/3-way valve

