

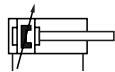
**Technical details**

<b>Operating pressure</b>	1 ... 10 bar
<b>Temperature range</b>	-20°C ... +80°C ( XL, XLD, XLL ) ( XLH: -10°C ... +150°C, XLC/ XLCD: -40°C ...+80°C )
<b>Max. stroke</b>	2800 mm
<b>Medium</b>	Filtered, oil-free and dried compressed air according to ISO 8573-1:2010, Class 7:2:4, instrument air, free of aggressive additives. Alternatively the pressure dew point must be at least 10°C below lowest occurring ambient temperature.
<b>Materials</b>	Cylinder tube: Al (anodized) End caps: Al-die-cast (painted) Piston rod: steel hard chrome plated (optional 1.4301) Seals: PU, NBR (optional FKM)
	Cylinders in accordance with 2014/34/EU (ATEX) available. (Chapter 13)

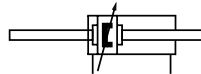


Double acting Al-profile cylinder with integrated sensor grooves, adjustable cushions and magnetic piston for proximity sensors. The sensors can be installed directly into the sensor grooves of the Al-profile. Standard stroke lengths in table below, additional lengths on request.

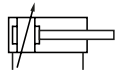
**Versions**



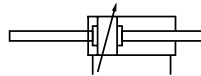
050, 054, 000, 004  
double acting, adjustable cushioning,  
with magnetic piston



450, 454, 400, 404  
double acting, double end piston rod, adjustab-  
le cushioning, with magnetic piston



152, 102  
double acting, adjustable cushioning



552, 502  
double acting, double end piston rod, adjusta-  
ble cushioning

**Order code**

Series		Options	
XL	standard	ATEX	cylinders in accordance with 2014/34/ EU (ATEX)
XLC	low temperature version	E8	piston rod seal E8, two-part, with plastic scraper
XLCD	low temperature version, with metal scraper	<b>Versions</b>	
XLD	with metal scraper	050	standard version
XLH	high temperature version	450	
XLL	low friction version	000	piston rod stainless steel
		400	
		054	piston rod seal FKM
		454	
		004	piston rod stainless steel , piston rod seal FKM
		404	
		152	high temperature version (without magnetic piston)
		552	
		102	high temperature version, piston rod stainless steel (without magnetic piston)
		502	
		<b>Stroke (mm)</b>	
		XXXX	max. 2800 mm*
		Standard	25, 40, 50, 80, 100, 125, 160, 200, 250, 320, 400, 500 mm

Not all combinations are possible and available.

\* For longer stroke lengths please check the max buckling load.

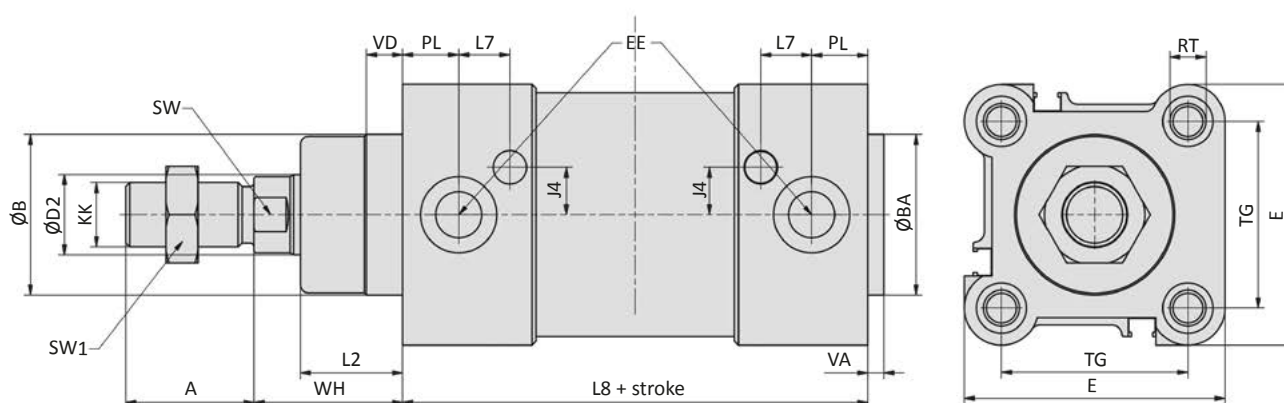
## Series XL

### ISO 1552, double acting

#### Technical data

Model-no.:	XL-032-...	XL-040-...	XL-050-...	XL-063-...	XL-080-...	XL-100-...	XL-125-...
Piston $\varnothing$ (mm)	32	40	50	63	80	100	125
Force at 6 bar (N)	Extension	434	678	1060	1682	2713	6623
	Retraction	373	570	890	1513	2448	6189
Connection	G1/8	G1/4	G1/4	G3/8	G3/8	G1/2	G1/2
Piston rod thread	M10 x 1.25	M12 x 1.25	M16 x 1.5	M16 x 1.5	M20 x 1.5	M20 x 1.5	M27 x 2
Cushioning length (mm)	27	29	32	32	32	32	42

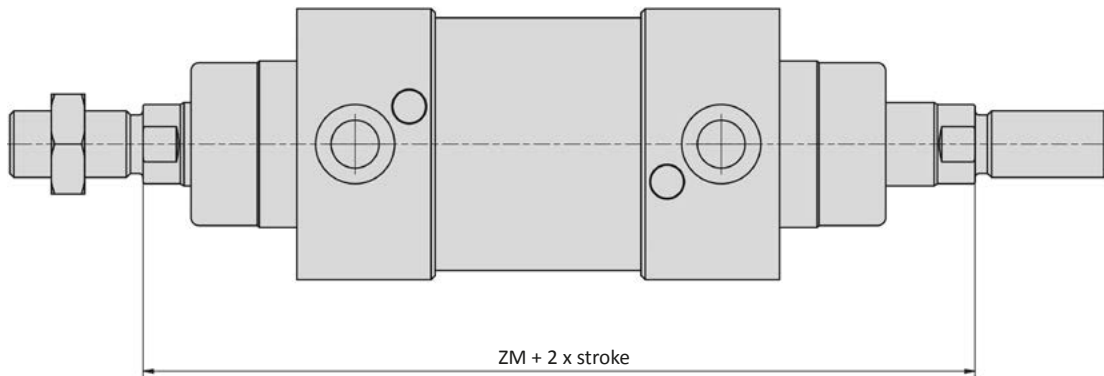
#### Dimensions series XL



Piston $\varnothing$	A	$\varnothing B$	$\varnothing BA$	$\varnothing D2$	E	EE	J4	KK	L2
32	22	30	30	12	47	G1/8	6	M10 x 1.25	18
40	24	35	35	16	54	G1/4	9	M12 x 1.25	22
50	32	40	40	20	63	G1/4	8	M16 x 1.5	25.5
63	32	45	45	20	74	G3/8	9.5	M16 x 1.5	25
80	40	45	45	25	93.5	G3/8	14	M20 x 1.5	35
100	40	55	55	25	110	G1/2	15	M20 x 1.5	38
125	54	60	60	32	137.5	G1/2	15	M27 x 2	46

Piston $\varnothing$	L7	L8	PL	RT	SW	SW1	TG	VA	VD	WH
32	11.5	94	12.5	M6	10	17	32.5	4	9.5	26
40	13	105	14	M6	13	19	38	4	9.5	30
50	12.75	106	14	M8	17	24	46.5	4	9.5	37
63	14.5	121	16.5	M8	17	24	56.5	4	9.5	37
80	13.75	128	17	M10	22	30	72	4	10	46
100	15.5	138	18	M10	22	30	89	4	10	51
125	20	160	18	M12	27	41	110	6	11	65

Piston $\varnothing$ (mm)	32	40	50	63	80	100	125
Weight 0 mm stroke (kg)	0.617	0.925	1.421	1.950	3.250	4.396	6.391
Weight each 100 mm stroke (kg)	0.286	0.403	0.528	0.597	0.861	0.946	1.517

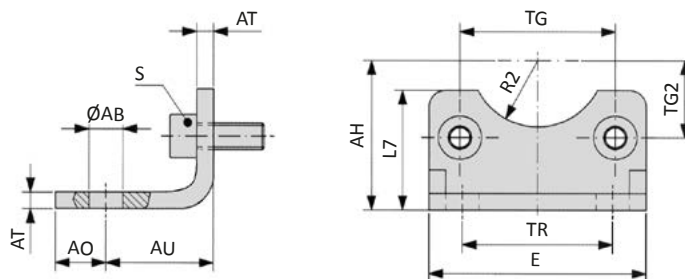
**Dimensions series XL (addition at double end piston rod)**


<b>Piston Ø (mm)</b>	32	40	50	63	80	100	125
<b>ZM</b>	146	165	180	195	220	240	290

<b>Piston Ø (mm)</b>	32	40	50	63	80	100	125
<b>Weight (kg)</b>							
<b>0 mm stroke</b>	0.702	1.065	1.713	2.208	3.780	5.057	9.387
<b>each 100 mm stroke</b>	0.374	0.559	0.768	0.837	1.243	1.328	2.143

## Series XL Mounting accessories

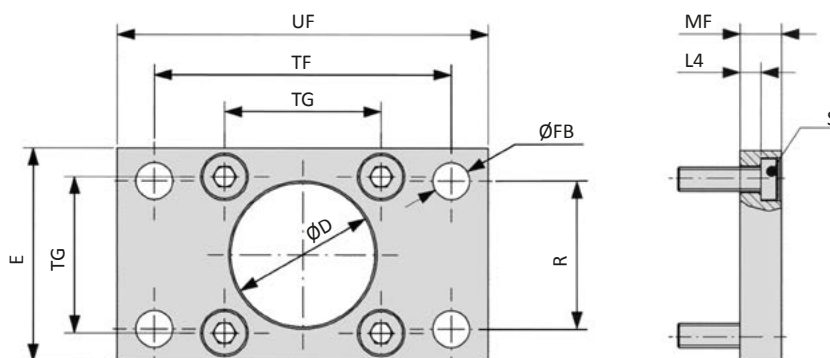
### XLB-xxx-01 Foot mount



Model-no.:	Ø AB	AH	AO	AU	AT	E	L7	R2	S	TG	TG2	TR
XLB-032-01	7	32	11	24	4	45	30	15	M6 x 16	32.5	16.25	32
XLB-040-01	10	36	8	28	4	52	30	17.5	M6 x 16	38	19	36
XLB-050-01	10	45	15	32	5	65	36	20	M8 x 20	46.5	23.25	45
XLB-063-01	10	50	13	32	5	75	35	22.5	M8 x 20	56.5	28.25	50
XLB-080-01	12	63	14	41	6	95	47	22.5	M10 x 20	72	36	63
XLB-100-01	14.5	71	16	41	6	115	53	27.5	M10 x 20	89	44.5	75
XLB-125-01	16.5	90	25	45	8	140	70	30	M12 x 25	110*	55	90
<i>tolerances and adjustments</i>	H14	JS16		± 0.2				H15		± 0.2 *± 0.3		JS14

Material: steel, zinc plated; 2 x 2 screws in accordance with EN ISO 4762 are included.

### XLB-xxx-02 Flange mount



Model-no.:	Ø D	E	Ø FB	L4	MF	R	S	TF	TG	UF
XLB-032-02	30	45	7	5	10	32	M6 x 20	64	32.5	80
XLB-040-02	35	52	9	5	10	36	M6 x 20	72	38	90
XLB-050-02	40	65	9	6.5	12	45	M8 x 20	90	46.5	110
XLB-063-02	45	75	9	6.5	12	50	M8 x 20	100	56.5	120
XLB-080-02	45	95	12	9	16	63	M10 x 25	126	72	150
XLB-100-02	55	115	14	9	16	75	M10 x 25	150	89	170
XLB-125-02	60	140	16	10.5	20	90	M12 x 25	180	110*	205
<i>tolerances and adjustments</i>	H11		H13	- 0.5	JS14	JS14		JS14	± 0.2 *± 0.3	

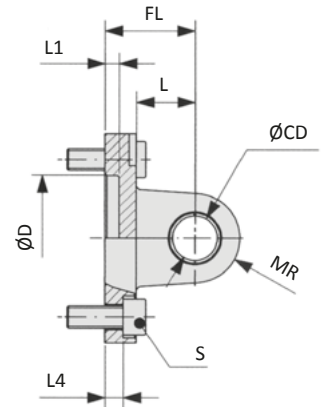
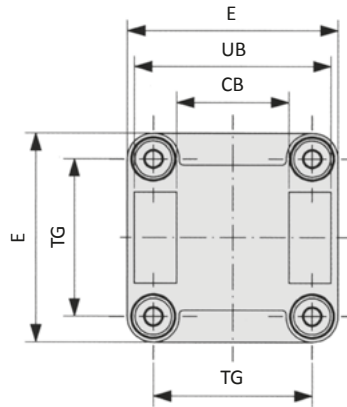
Material: steel, zinc plated; 4 screws in accordance with DIN 7984 are included.



**XLB-xxx-04 Clevis mount with bushing**



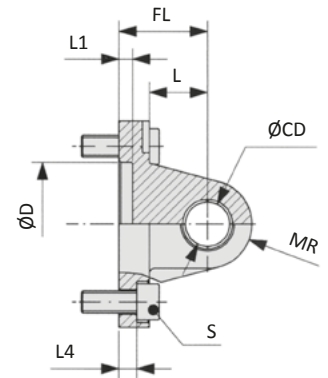
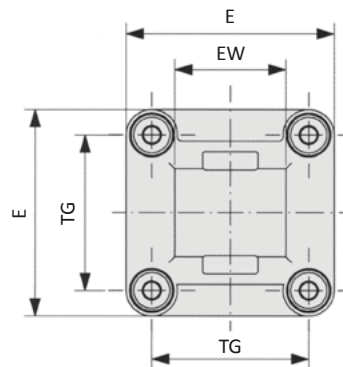
Inclusive clevis pin  
order no: XLB-xxx-48



Model-no.:	CB	Ø CD	Ø D	E	FL	L	L1	L4	MR	S	TG	UB
XLB-032-04	26	10	30	45	22	13	5	5.5	10	M6 x 20	32.5	45
XLB-040-04	28	12	35	52	25	16	5	5.5	12	M6 x 20	38	52
XLB-050-04	32	12	40	65	27	16	5	6.5	12	M8 x 20	46.5	60
XLB-063-04	40	16	45	75	32	21	5	6.5	16	M8 x 20	56.5	70
XLB-080-04	50	16	45	95	36	22	5	10	16	M10 x 25	72	90
XLB-100-04	60	20	55	115	41	27	5	10	20	M10 x 25	89	110
XLB-125-04	70	25	60	140	50	30	7	10	25	M12 x 25	110*	130
<i>tolerances and adjustments</i>	H14	H9	H11		± 0.2			± 0.5			± 0.2 *± 0.3	h13

Materials: Al, bushing steel and PTFE; 4 screws in accordance with EN ISO 4762 are included.

**XLB-xxx-05 Swivel mount**

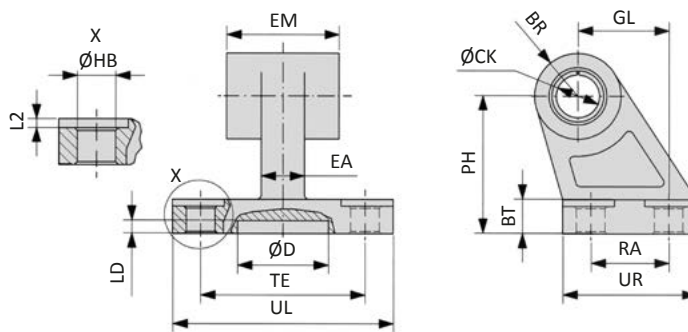


Model-no.:	Ø CD	Ø D	E	EW	FL	L	L1	L4	MR	S	TG
XLB-032-05	10	30	45	26	22	13	5	5.5	10	M6 x 20	32.5
XLB-040-05	12	35	52	28	25	16	5	5.5	12	M6 x 20	38
XLB-050-05	12	40	65	32	27	16	5	6.5	12	M8 x 20	46.5
XLB-063-05	16	45	75	40	32	21	5	6.5	16	M8 x 20	56.5
XLB-080-05	16	45	95	50	36	22	5	10	16	M10 x 25	72
XLB-100-05	20	55	115	60	41	27	5	10	20	M10 x 25	89
XLB-125-05	25	60	140	70	50	30	7	10	25	M12 x 25	110*
<i>tolerances and adjustments</i>	H9	H11			± 0.2			± 0.5			± 0.2 *± 0.3

Materials: Al, bushing steel and PTFE; 4 screws in accordance with EN ISO 4762 are included.

## Series XL Mounting accessories

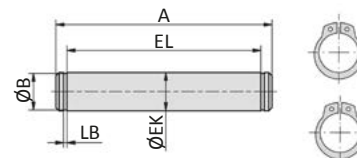
### XLB-xxx-06 Swivel mount 90°



Model-no.:	BR	BT	ØCK	Ø D	EA	EM	GL	ØHB	L2	LD	PH	RA	TE	UL	UR
<b>XLB-032-06</b>	10	8	10	21	10	26	21	6.6	1.6	3	32	18	38	51	31
<b>XLB-040-06</b>	11	10	12	21	15	28	24	6.6	1.6	3	36	22	41	54	35
<b>XLB-050-06</b>	13	12	12	21	16	32	33	9	1.6	3	45	30	50	65	45
<b>XLB-063-06</b>	15	14	16	21	16	40	37	9	1.6	3	50	35	52	67	50
<b>XLB-080-06</b>	15	14	16	21	20	50	47	11	2.5	3	63	40	66	86	60
<b>XLB-100-06</b>	19	17	20	11	20	60	55	11	2.5	3	71	50	76	96	70
<b>XLB-125-06</b>	22.5	20	25	21	30	70	70	14	3.2	3	90	60	94	124	90
<i>tolerances and adjustments</i>			H9				JS14	H13			JS15	JS14	JS14		

Materials: Al, bushing steel and PTFE

### XLB-xxx-08 Clevis pin

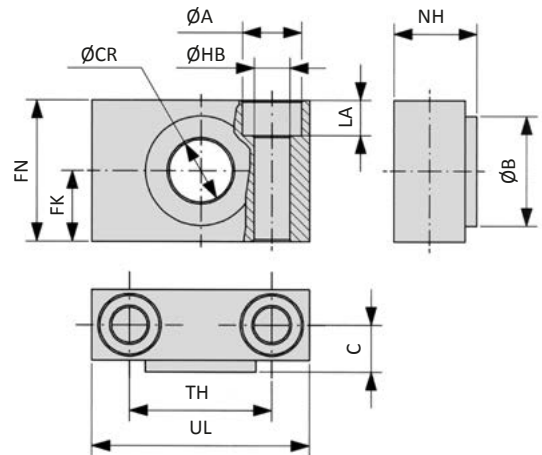
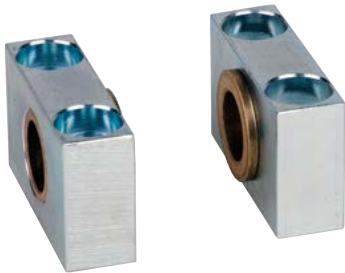


Model-no.:	A	Ø B	Ø EK	EL	LB
<b>XLB-032-08</b>	53	9.6	10	46	1.1
<b>XLB-040-08</b>	60	11.5	12	53	1.1
<b>XLB-050-08</b>	68	11.5	12	61	1.1
<b>XLB-063-08</b>	78	15.2	16	71	1.1
<b>XLB-080-08</b>	98	15.2	16	91	1.1
<b>XLB-100-08</b>	118	19	20	111	1.3
<b>XLB-125-08</b>	139	23.9	25	132*	1.3
<i>tolerances and adjustments</i>			e8	+2 *+3	

Material: steel, zinc plated; 2 snap rings are included.



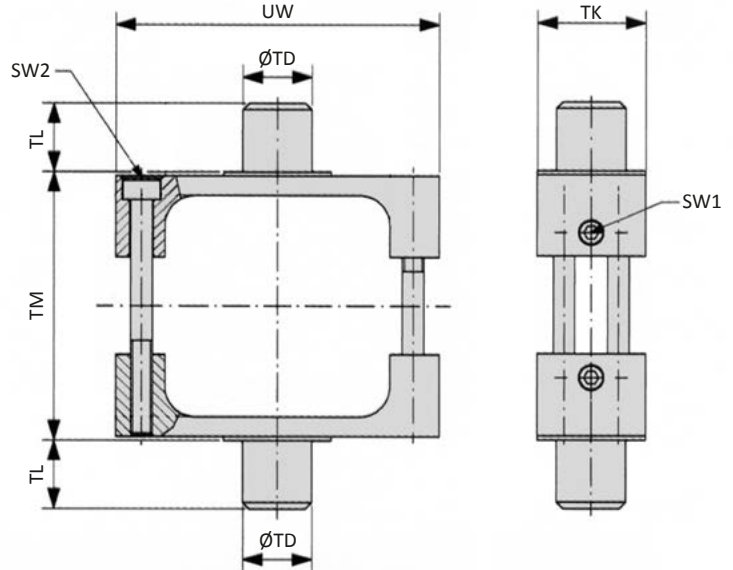
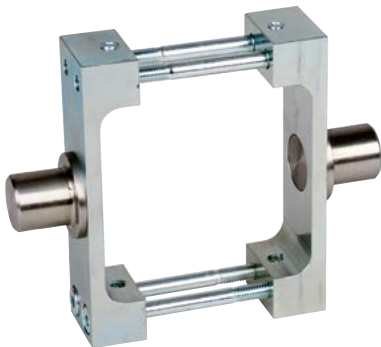
**XLB-xxx-09 Bearing block**



Model-no.:	Ø A	Ø B	C	Ø CR	FK	FN	Ø HB	LA	NH	TH	UL
<b>XLB-032-09</b>	11	22	10.5	12	15	30	6.6	7	18	32	46
<b>XLB-040-09</b>	15	28	12	16	18	36	9	9	21	36	55
<b>XLB-063-09</b>	18	32	13	20	20	40	11	11	23	42	65
<b>XLB-100-09</b>	20	39	16	25	25	50	14	13	28.5	50	75
<i>tolerances and adjustments</i>				H9	± 0.1		H13			± 0.2	

Materials: Al, bronze bushing

**XLB-xxx-10 Trunnion mount**



Model-no.:	SW1	SW2	Ø TD	TK	TL	TM	UW
<b>XLB-032-10</b>	3	2.5	12	25	12	50	65
<b>XLB-040-10</b>	3	3	16	25	16	63	75
<b>XLB-050-10</b>	3	4	16	30	16	75	95
<b>XLB-063-10</b>	3	4	20	30	20	90	105
<b>XLB-080-10</b>	3	4	20	30	20	110	130
<b>XLB-100-10</b>	4	5	25	40	25	132	145
<b>XLB-125-10</b>	4	6	25	40	25	160	175
<i>tolerances and adjustments</i>			e9		h14	h14	

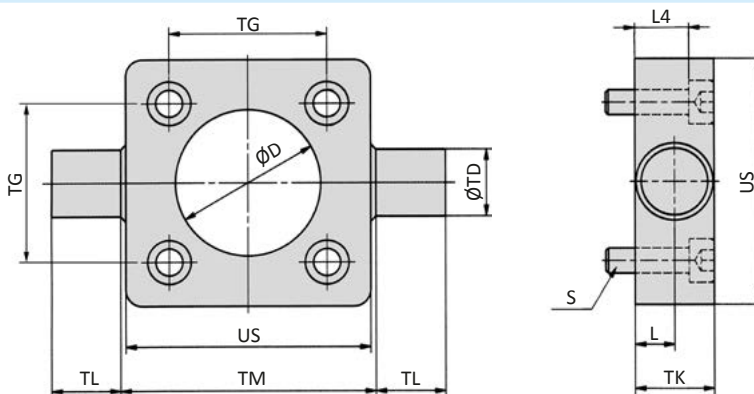
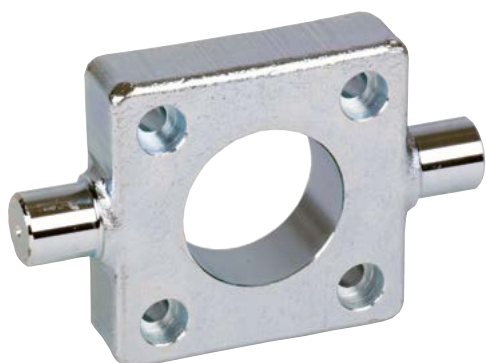
Material: steel, zinc plated





## Series XL Mounting accessories

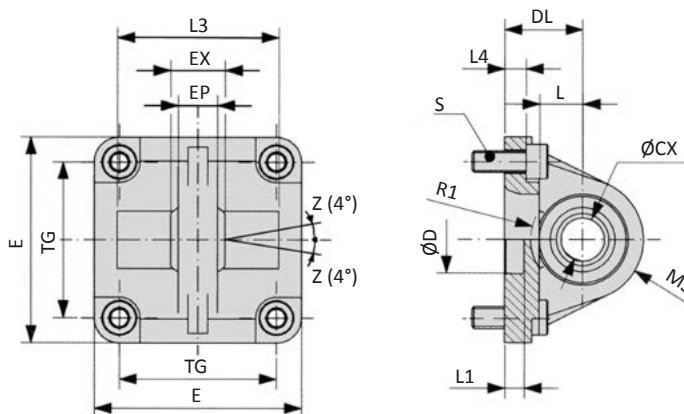
### XLB-xxx-11 Trunnion mount



Model-no.:	Ø D	L	L4	S	Ø TD	TG	TK	TL	TM	US
<b>XLB-032-11</b>	30	6.5	8	M6 x 20	12	32.5	14	12	50	46
<b>XLB-040-11</b>	35	9	13	M6 x 25	16	38	19	16	63	59
<b>XLB-050-11</b>	40	9	11	M8 x 25	16	46.5	19	16	75	69
<b>XLB-063-11</b>	45	11.5	16	M8 x 30	20	56.5	24	20	90	84
<b>XLB-080-11</b>	45	11.5	14	M10 x 30	20	72	24	20	110	102
<b>XLB-100-11</b>	55	14	19	M10 x 35	25	89	29	25	132	125
<b>XLB-125-11</b>	60	15	18	M12 x 35	25	110*	30	25	160	150
<i>tolerances and adjustments</i>	H 11	+ 0.2			e9	± 0,2 *± 0,3		h14	h14	

Material: steel, zinc plated; 4 screws in accordance with EN ISO 4762 are included.

### XLB-xxx-12 Swivel mount with spherical bearing



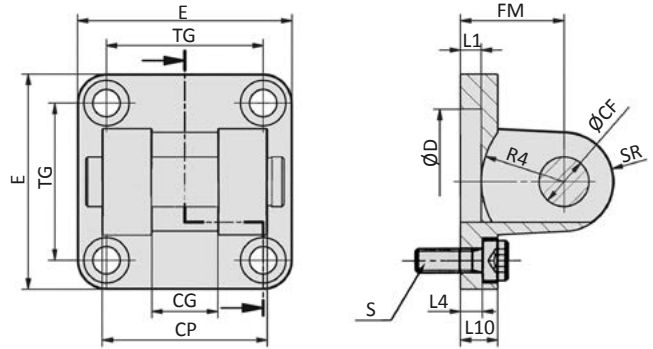
Model-no.:	Ø CX	Ø D	DL	E	EP	EX	L	L1	L3	L4	MS	R1	S	TG
<b>XLB-032-12</b>	10	30	22	45	10.5	14	12	7	-	5.5	16	-	M6 x 20	32.5
<b>XLB-040-12</b>	12	35	25	52	12	16	15	7	-	5.5	18	-	M6 x 20	38
<b>XLB-050-12</b>	16	40	27	65	15	21	15	7	51	6.5	21	19	M8 x 20	46.5
<b>XLB-063-12</b>	16	45	32	75	15	21	20	7	-	6.5	23	-	M8 x 20	56.5
<b>XLB-080-12</b>	20	45	36	95	18	25	20	9	74	10	28	24	M10 x 25	72
<b>XLB-100-12</b>	20	55	41	115	18	25	25	9	-	10	30	-	M10 x 25	89
<b>XLB-125-12</b>	30	60	50	140	25	37	30	9	-	10	40	-	M12 x 25	110*
<i>tolerances and adjustments</i>	H7	H11	± 0.2			± 0.1				± 0.5				± 0.2 *± 0.3

Materials: Al, bearing steel, bronze bushing; 4 screws in accordance with EN ISO 4762 are included.





**XLB-xxx-14 Clevis mount small with pin**



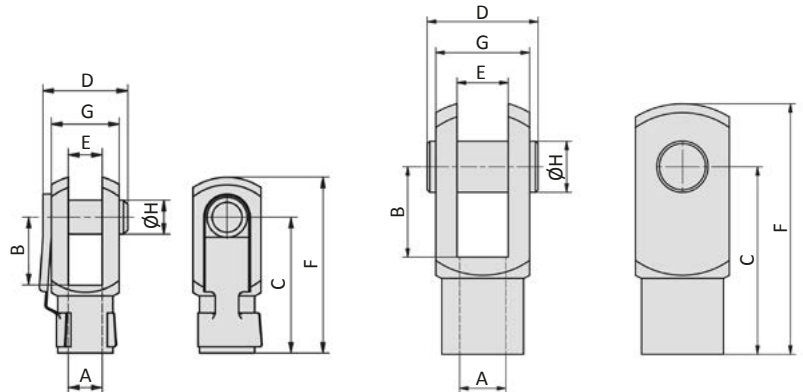
Model-no.:	Ø CF	CG	CP	Ø D	E	FM	L1	L4	L10	R4	S	SR	TG
<b>XLB-032-14</b>	10	14	34	30	45	22	5	5.5	9	17	M6 x 20	10	32.5
<b>XLB-040-14</b>	12	16	40	35	52	25	5	5.5	9	20	M6 x 20	12	38
<b>XLB-050-14</b>	16	21	45	40	65	27	5	6.5	11	22	M8 x 20	14	46.5
<b>XLB-063-14</b>	16	21	51	45	75	32	5	6.5	11	25	M8 x 20	18	56.5
<b>XLB-080-14</b>	20	25	65	45	95	36	5	10	14	30	M10 x 25	20	72
<b>XLB-100-14</b>	20	25	75	55	115	41	5	10	14	32	M10 x 25	22	89
<b>XLB-125-14</b>	30	37	97	60	140	50	7	10	20	42	M12 x 25	25	110*
<i>tolerances and adjustments</i>	F7	D10	d12	H11		± 0.2		± 0.5					± 0.2 *± 0.3

Materials: Al, bushing steel and PTFE, clevis pin steel, zinc plated; 4 screws in accordance with EN ISO 4762 are included.

**RD-xx, FD-xxx Rod clevis**

Spring loaded pin (RD-25, FD-40...80)

Clevis pin with snap rings (FD-125)

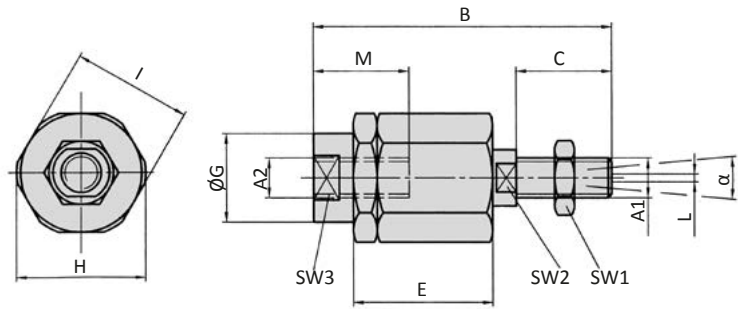


Model-no.:	for cylinder	A	B	C	D	E	F	G	Ø H
<b>RD-25</b>	XL-032	M10 x 1.25	20	40	26	10	52	20	10
<b>FD-40</b>	XL-040	M12 x 1.25	24	48	32	12	62	24	12
<b>FD-63</b>	XL-050, XL-063	M16 x 1.5	32	64	40	16	83	32	16
<b>FD-80</b>	XL-080, XL-100	M20 x 1.5	40	80	50	20	105	40	20
<b>FD-125</b>	XL-125	M27 x 2	54	110	65	30	148	55	30

Material: steel, zinc plated

## Series XL Mounting accessories

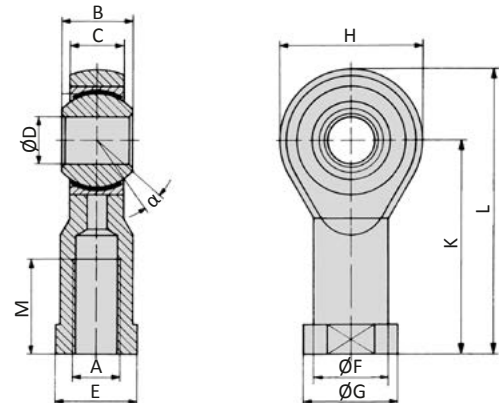
### FK-xxx Flexible coupling



Model-no.:	for cylinder	A1, A2	B	C	D	E	Ø G	H	I	L	M	SW1	SW2	SW3	α
FK-32	XL-032	M10 x 1.25	71.5	20	7.5	35	22	32	30	2	22	17	12	19	8°
FK-40	XL-040	M12 x 1.25	71.5	20	7.5	35	22	32	30	2	22	19	12	19	8°
FK-63	XL-050, XL-063	M16 x 1.5	104	32	10	53	32	45	41	2	30	24	20	27	6°
FK-80	XL-080, XL-100	M20 x 1.5	119	40	10	53	32	45	41	2	37	30	20	27	6°
FK-125	XL-125	M27 x 2	147	54	10	60	57	70	65	2	48	41	24	54	8°

Material: steel, zinc plated

### RO-xx, FO-xxx Rod eye



Model-no.:	for cylinder	A	B	C	Ø D	E	Ø F	Ø G	H	K	L	M	α
RO-25	XL-032	M10 x 1.25	14	10.5	10	17	15	19	28	43	57	20	13°
FO-40	XL-040	M12 x 1.25	16	12	12	19	17.5	22	32	50	66	22	13°
FO-63	XL-050, XL-063	M16 x 1.5	21	15	16	22	22	27	42	64	85	28	15°
FO-80	XL-080, XL-100	M20 x 1.5	25	18	20	30	27.5	34	50	77	102	33	14°
FO-125	XL-125	M27 x 2	37	25	30	41	40	50	70	110	145	51	17°

Materials: steel, zinc plated, bearing steel, bronze bushing

### Proximity sensors

