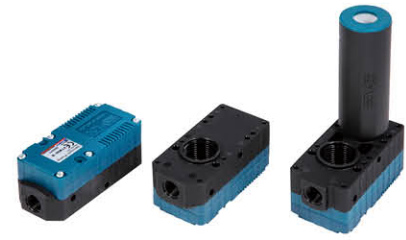


# VACUUM PUMPS / Mini pumps

## VTM20 / VTX20

### Features and Strengths

- Multi-stage ejector
- Compact size and light weight
- Aluminum and plastic body available
- Quick response time



### Specifications

Description	VTM20	VTX20
Max. Vacuum level	-85 kPa	-92 kPa
Open Vacuum flow	149 NI/min	124 NI/min
Max. Feed pressure	7 bar	7 bar
Temperature	-20 ~ 80 °C	-20 ~ 80 °C
Noise level	60 ~ 68 dbA	63 ~ 68 dbA
Weight	42.6 g	42.6 g

### Vacuum Flow

Model	Max. vacuum (-kPa)	Vacuum flow (NI/min) at different vacuum levels (-kPa)									
		0	10	20	30	40	50	60	70	80	90
VTM20	85	149	99	62	54	40	32	22	10.5	2.7	-
VTX20	92	124	72	35	32	27	22	18	12	4.8	1.8

### Evacuation Time

Model	Air Consumption (NI/min)	Evacuation time in sec / liter to reach different vacuum levels (-kPa)								
		10	20	30	40	50	60	70	80	90
VTM20	60 ~ 84	0.054	0.139	0.25	0.394	0.589	0.86	1.317	2.579	-
VTX20	86.4 ~ 96	0.064	0.199	0.379	0.6	0.89	1.227	1.722	2.54	4.797