

VACUUM PUMPS / Spider vacuum speeders

SC202 / SC203

Features and Strengths

- Highly operational reliability despite fluctuating or low compressed-air pressure
- Integrated check valve on vacuum release port
 - Quick evacuation time
- Compact size and light weight



Specifications

Description	SC202	SC203
Max. Vacuum level	-90 kPa	-90 kPa
Open Vacuum flow	44 NI/min	84.5 NI/min
Max. Feed pressure	7 bar	7 bar
Temperature	-20 ~ 80 °C	-20 ~ 80 °C
Noise level	59 ~ 65 dbA	59 ~ 65 dbA
Weight	80g	85g

Vacuum Flow

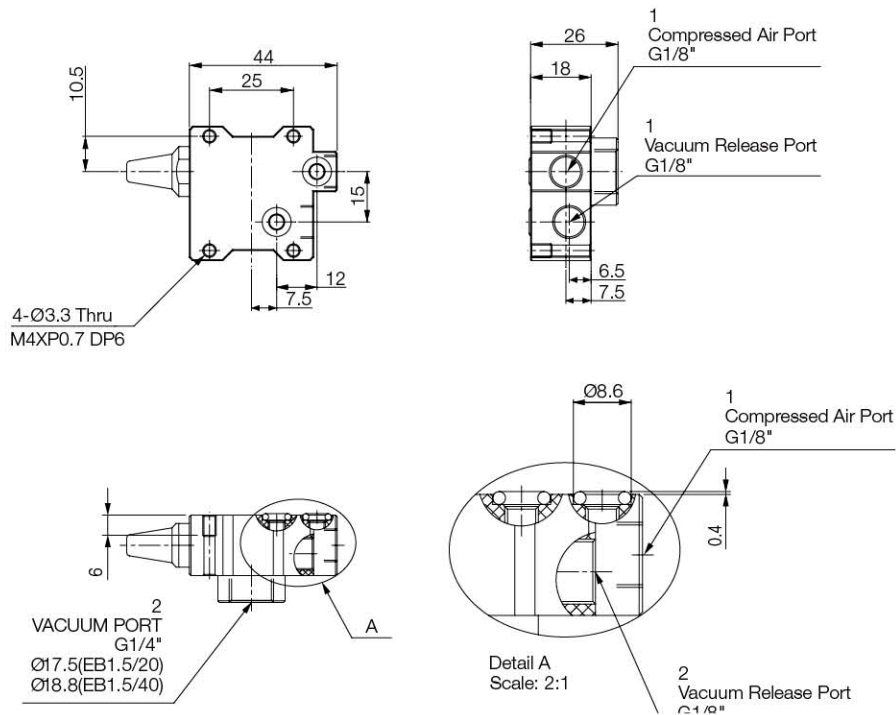
Model	Max. vacuum (-kPa)	Feed Pressure (bar)	Vacuum flow (NI/min) at different vacuum levels (-kPa)									
			0	10	20	30	40	50	60	70	80	90
SC202	48	1.7	38.5	20	16	12	5.3					
	65	2.2	39	26.5	17.3	15.6	13.5	8.4	2.6			
	90	3.14	44	36	24.5	16.5	16	13.8	10	7	3.5	
	89	4.0	42	38.8	28.5	21.2	15.8	12.2	9.5	7	2.4	
SC203	49	1.7	55	23.2	15.5	12.6	6.1					
	65	2.2	68	31	16.5	15.5	13.8	9	3.5			
	90	3.14	84	37.5	26	16	15.2	12.3	10	7.2	4	
	89	4.0	84.5	40	33.2	22.6	15.8	12	9.2	7.3	2.9	

Evacuation Time

Model	Feed Pressure (bar)	Air Consumption (NI/min)	Evacuation time in sec / liter to reach different vacuum levels (-kPa)								
			10	20	30	40	50	60	70	80	90
SC202	1.7	22	0.33	0.47	0.89	1.93					
	2.2	25.5	0.20	0.47	0.70	0.92	1.24	1.35			
	3.14	34	0.15	0.39	0.95	1.03	1.28	1.32	2.12	3.54	
	4.0	40	0.15	0.42	0.56	0.80	0.99	1.21	1.46	3.74	
SC203	1.7	22	0.13	0.40	0.79	1.57					
	2.2	25.5	0.08	0.39	0.59	0.85	0.96	1.10			
	3.14	34	0.06	0.28	0.51	1.01	1.18	1.29	1.73	3.00	
	4.0	40	0.08	0.24	0.50	0.71	0.85	1.18	1.41	3.05	

Dimensions – SC202P-C

[Unit : mm]



Dimensions – SC203P-C

[Unit : mm]

