

DATI TECNICI - TECHNICAL DATA

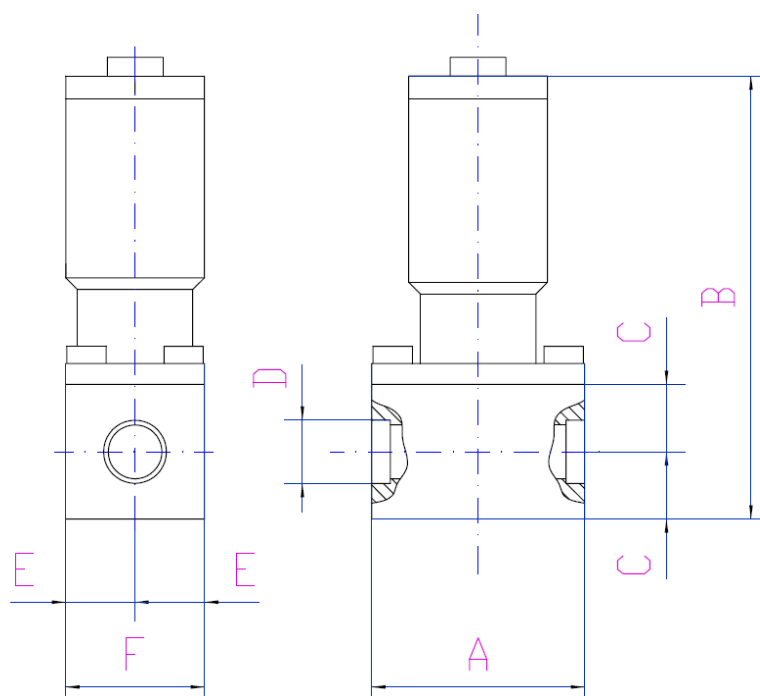
PCMVF_005_1/4

Diametro Nominale	<i>Nominal Diameter:</i>	DN 5	
Pressione Nominale	<i>Nominal Pressure:</i>	PN 60	
Corpo	<i>Body:</i>	AISI316 EN 1.4401	
Guarnizione Corpo	<i>Body Seal:</i>	FPM	
Bonnet	<i>Bonnet:</i>	AISI316 EN 1.4401	
Tenuta	<i>Seal:</i>	PTFE/C755	PTFE+graphite
Albero+Otturatore	<i>Stem+Plug:</i>	AISI316 EN 1.4401	
Pacco Premistoppa	<i>Packing Gland:</i>	PTFE/C755 - FPM	
Tenuta Pistone	<i>Piston Seal:</i>	FPM	
Diametro Attuatore	<i>Actuator Size:</i>	Ø 25	
Materiale Attuatore	<i>Actuator Material:</i>	AISI316 EN 1.4401	
Min Pressione Alimentaz.	<i>Min Feeding Pressure:</i>	5 bar	
Max Pressione Alimentaz.	<i>Max Feeding Pressure:</i>	10 bar	
Connessione Aria	<i>Air Connection:</i>	M 5	
Max Dp	<i>Max Dp:</i>	12 bar	
Min Temperatura <u>Esterna</u>	<i>Min Room Temperature:</i>	-10°C	
Max Temperatura <u>Esterna</u>	<i>Max Room Temperature:</i>	+100°C	
Min Temperatura <u>Fluida</u>	<i>Min Fluid Temperature:</i>	-10°C	
Max Temperatura <u>Fluida</u>	<i>Max Fluid Temperature:</i>	+170°C	
Kv	<i>Kv:</i>	0.81 m ³ /h	
Connessioni Corpo	<i>Body Ends:</i>	1/4" FF - ISO 228 G	
Funzione	<i>Function:</i>	N.C.	aria apre - air opens



DIMENSIONI E PESI - DIMENSIONS AND WEIGHT

PCMVF_005_1/4



DIMENSIONI E PESI - DIMENSIONS AND WEIGHT							
DN	A	B	C	D	E	F	Kg
5	46	99,5	14,5	13,6	15	30	0,6