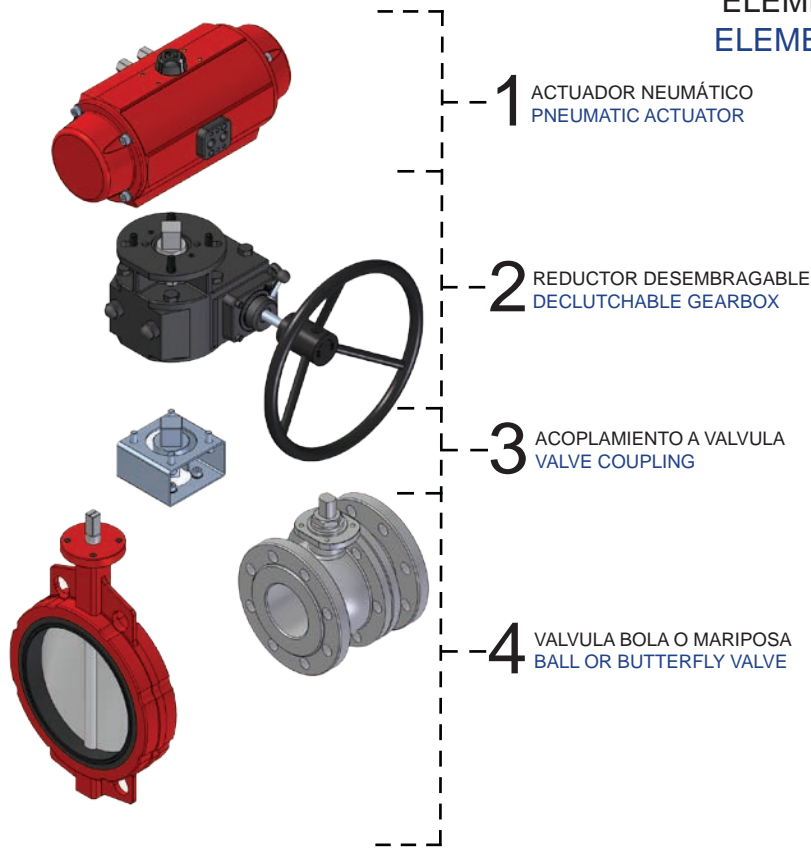
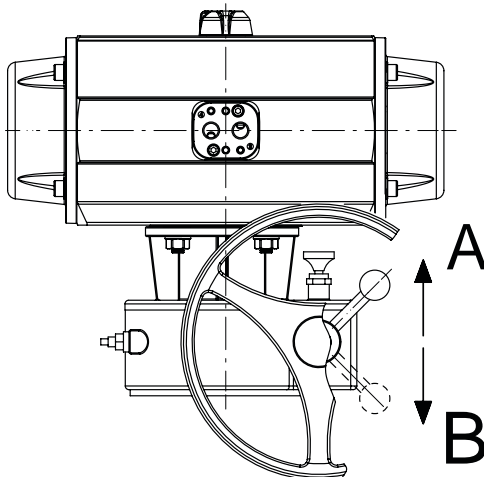


ELEMENTOS DE REGULACIÓN Y CONTROL
ELEMENTS OF REGULATION AND CONTROL

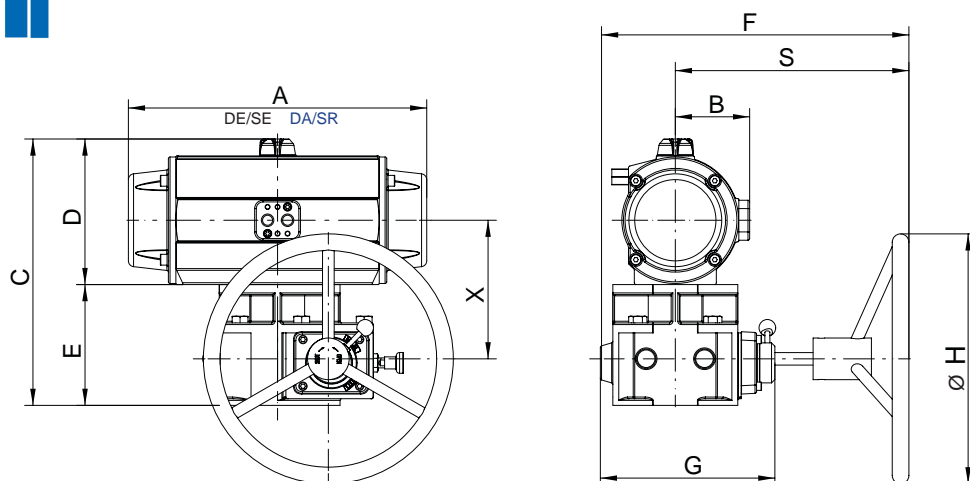


**REDUCTOR DESEMBRAGABLE
DECLUTCHABLE GEARBOX**

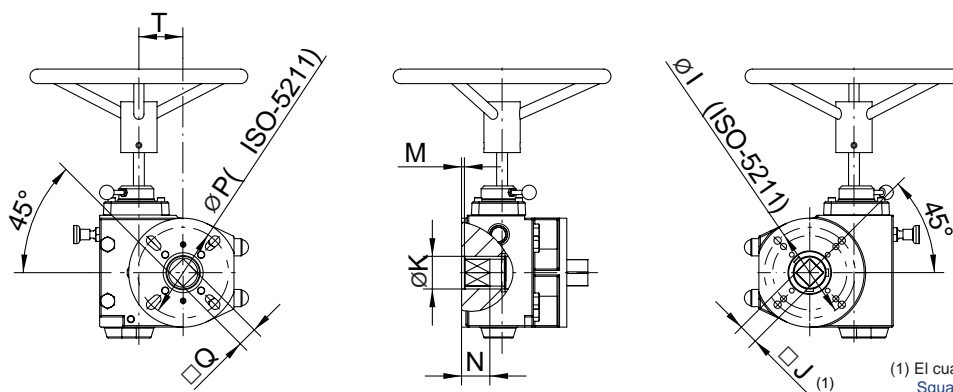


A	REDUCTOR EMBRAGADO CLUTCHED GEARBOX
B	REDUCTOR DESEMBRAGADO UNCLUTCHED GEARBOX

NOTA: No aplicable a actuadores de 180°
NOTE: Not applicable to 180° actuators



ACTUADOR ACTUATOR	REDUCTOR GEARBOX	INSTALACION INSTALLATION	DIMENSIONES (mm)										
			A		B	C	D	E	F	G	S	H	X
			DE/DA	SE/SR									
PA00-PA00S	RD-315	IRD-31500	152	52	240	101	103	272	157	196	150	107	
PA05-PA05S		IRD-31510	201	62	257	118						113	
PA10-PA10S			224	63	261	122						116	
PA15-PA15S			264	71	277	138						124	
PA20-PA20S	RD-320	IRD-32020	310	75	297	146	122	295	166	216	150	140	
PA25-PA25S		IRD-32025	356	89	325	174						153	
PA30-PA30S	RD-330		IRD-33025	428	97	413	430	191	145	370	210	280	300
		IRD-33030	725			175							
P40-P40S	RD-345	IRD-34540	444	598	120	569	272	162	396	243	286	400	213
P50-P50S		IRD-34550	524	694	135	610	313						230
	PA60-PA60S		RD-350	IRD-35050	671	172	780	368	175	459	267	348	600
IRD-36050		865		274									
IRD-36060		925		284									
PA70-PA70S	RD-360	IRD-36070	743	216	955	428	194	483	300	356	750	313	313
	RD-370	IRD-37070			209								628



DIMENSIONES DEL REDUCTOR
GEARBOX DIMENSIONS

(1) El cuadrado se puede girar a 45°
Square can be turned 45°

REDUCTOR GEARBOX	LADO ACTUADOR ACTUATOR SIDE				LADO VALVULA VALVE SIDE						Peso* Weight*	PAR Torque (Nm)
	ISO-5211		■ Q	T	ISO-5211		■ J	K	M	N max.		
	STAND.	OPTION			STANDARD	OPTION						
RD-315	F05-F07	-	27 max.	46	F05-F07	-	14 max.	35	2	41	4,7 Kg	150
RD-320	F05-F07	-	30 max.	56	F05-F07-F10	-	17 max.	45	4	45	7,3 Kg	250
RD-330	F07-F10-F12	-	34 max.	68	F07-F10-F12	-	27 max.	60	6	58	17 Kg	750
RD-345	F12	F10-F14	48 max.	88	F14	F10-F12	34 max.	75	4	66	21 Kg	1450
RD-350	F14	F12-F16	52 max.	115	F14	F10-F12-F16	36 max.	88	5	71	34 Kg	2485
RD-360	F16	F14	62 max.	137	F16	F12/F14	46 max.	102	7	92	54 Kg	3390
RD-370	F16-F25	-	65 max.	165	F16-F25	-	55 max.	130	6	113	80 Kg	7450

(*) Excluidos los volantes
(* Excluded handwheels)