



2/2-way pressure controlled valve  
NC - Valve normally closed

Direct operated valve.

No differential pressure is necessary for operation. When energized, the valve seat is opened directly.

In standard (NC) the valve closes with spring power.

■ Pressure controlled valve for high pressure applications

## TECHNICAL SPECIFICATIONS

Type of control	Direct operated valve, no pressure difference required
Design	Poppet design
Connection	Sleeve connection BSP, NPT, UNF
Installation	Actuator upright or lateral
Pressure	0 - 1000 bar (see table on page 2)
Medium	Clean, neutral gaseous
Max. viscosity	22 mm <sup>2</sup> /s
Temperature range	Medium: -40 °C / +80 °C Environment: -20 °C / +60 °C
Body material	Stainless steel
Metallic inner parts	Stainless steel
Sealing	PEEK, metallic
Pilot pressure	6 - 10 bar
Pilot medium	Clean, neutral gaseous

### Pilot valve

**A7231/1002/....**

3/2-way direct operated, NC  
G1/8, orifice 1.5mm, 0-8 bar  
brass / st. steel / FKM

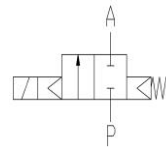


## VALVE FEATURES

- For high pressure applications up to 1000 bar
- No pressure difference required
- High life time
- Simple compact valve design
- High-quality materials
- Reliable and tested sealing elements

## FUNCTION

NC – non energized closed

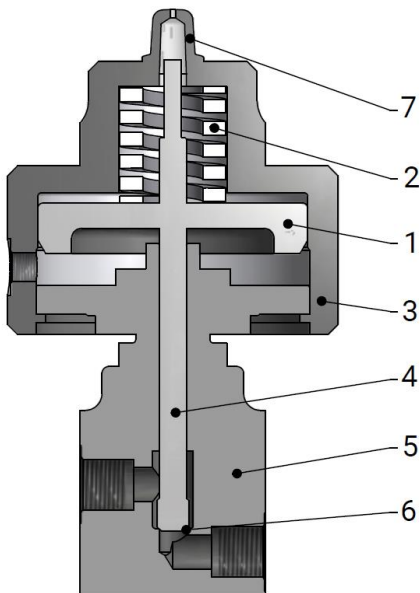


## CERTIFICATES



# TECHNICAL FEATURES

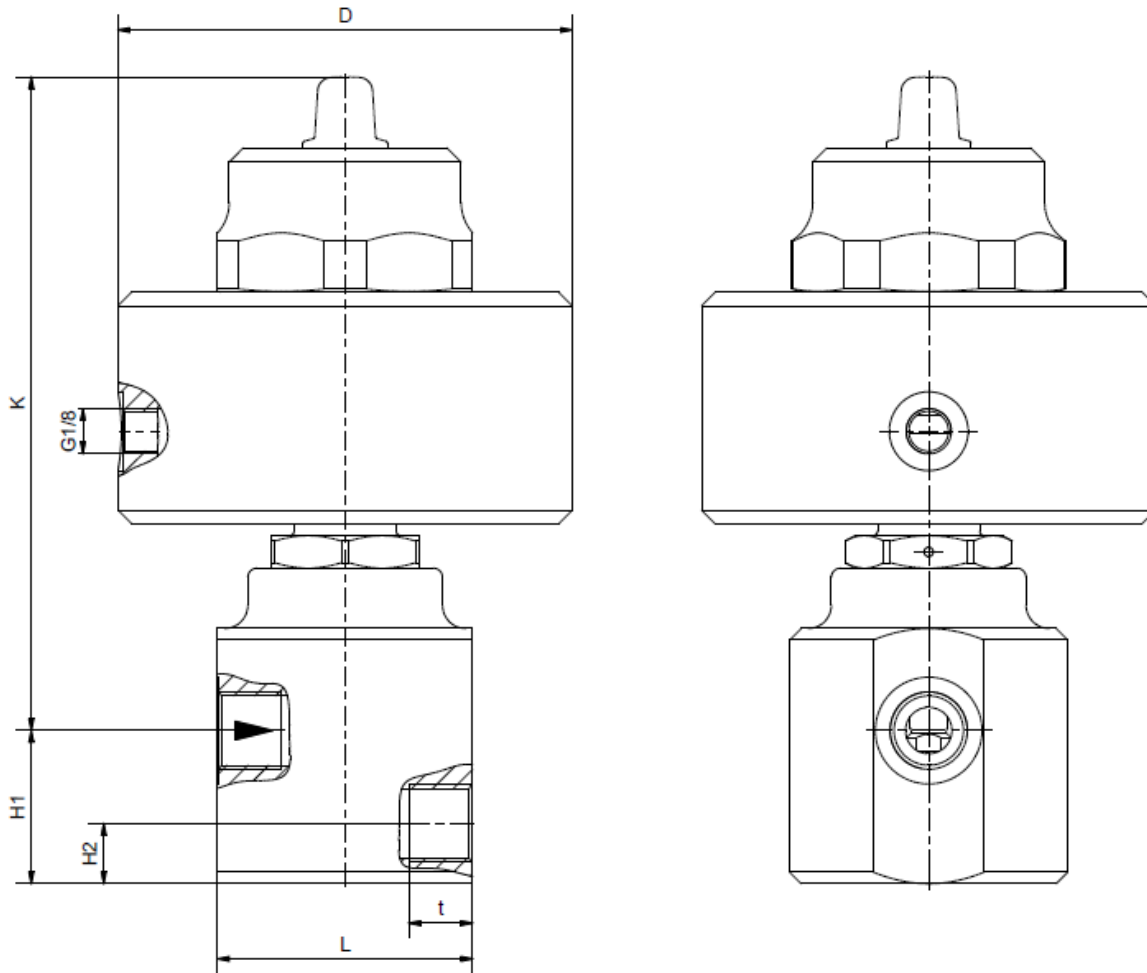
Connect.	Seat Ø mm	Kv-value m³/h	Standard type	max. pressure with actuator		
				7.05	7.08	7.13
BSP 1/4 - 3/8 - 1/2	4,0	0,4	8/100-5-13.-.....	0-300	0-400	-
	8,0	0,7	8/100-8-13.-.....	-	0-400	-
NPT 1/4 - 3/8 - 1/2	4,0	0,4	8/100-5-13.-.....-NG	0-300	0-1000	0-1000
	8,0	0,7	8/100-8-13.-.....-NG	-	0-400	0-1000
UNF	4,0	0,4	8/100-5-13.-.....-TT	0-300	0-1000	0-1000
	8,0	0,7	8/100-8-13.-.....-TT	-	0-400	0-1000



Description	
1	Piston
2	Spring
3	Cylinder
4	Spindle
5	Valve body
6	Valve seat
7	Position indicator
(not available in the ATEX version)	



# DIMENSIONS



Type	8/100-4.(5.)(6.)-...-7.05	8/100-4.(5.)(6.)-...-7.08	8/100-4.(5.)(6.)-...-7.13	8/100-(A.-G.)-...-7.05	8/100-(A.-G.)-...-7.08	8/100-(A.-G.)-...-7.13
G	1/4 (3/8) (1/2)	1/4 (3/8) (1/2)	1/4 (3/8) (1/2)	UNF	UNF	UNF
D	61	98	149	61	98	149
K	143	141	192	143	141	192
H1	33	33	33	33	33	33
H2	13	13	13	13	13	13
L	55	55	55	55	55	55
t	13,5 (13,5) (15,0)	13,5 (13,5) (15,0)	13,5 (13,5) (15,0)	on req.	on req.	on req.
kg	2,3	2,6	4,9	2,3	2,6	4,9



## INFORMATION

- It is imperative to observe the installation and safety instructions in our operating and service manuals.
- Required ordering information: valve type, function NC/NO, pressure range, connection, nominal width, medium, flow rate, medium and ambient temperatures, connection voltage.
- **For information on the heating and performance of solenoid coils, refer to the corresponding "Coils" data sheet.**
- **Detailed production-specific drawings and other technical information will be made available when an order is placed.**

## PLEASE NOTE

Each individual application decides which valve type is required, the main factor being the resistance of the materials to the operating medium. The correct selection of materials requires knowledge of the concentration, temperature and degree of contamination of the medium. Other criteria include the operating pressure and max. volumetric flow, since, in addition to high temperatures, high pressures and high flow rates must also be taken into account when selecting the materials.

**All materials used for our valves, be it housing, seals or magnets, will be carefully selected in view of the different application areas. Any information given is non-binding and serves for orientation only. No claims under warranty can be derived therefrom.**

## ORDERING CODE

Type	Connection	Body	Sealing	Actuator	Option
<b>8/100</b> <b>2/977</b>	<b>6 8</b>	<b>1 3</b>	<b>1 5</b>	<b>7 0</b> <b>0 8</b>	<b>X X</b>
4 . G 1/4	13	St.steel 1.4404	7 . Closed wo/ press.	TT	UNF
5 . G 3/8			8 . Open wo/ press.	1W	Hydrogen
6 . G 1/2		00   metallic	9 . double-acting		
A . 7/16-20 UNF		15   PEEK	. 0 Standard-Actuator		
B . 9/16-18 UNF			. 3 Actuator-St. steel		
C . 13/16-16 UN			. 5 Actuator-nickel-pl.		
D . 3/4-14- NPSM				05	50 mm
E . 1-3/8-12 UNF				08	80 mm
F . 9/19-18 UNF				13	125 mm
G . 3/4-16 UNF					
H . 1-1/8-12-UNF					
. 5   4 mm					
. 8   8 mm					

 **2/977: ATEX acc. to 20/14/34EU // PTB 04 ATEX D 042 // II 2G Ex h IIC T6...T4 Gb X // II 2D Ex h IIIC T80°C Db X**