



2/2-way pressure controlled valve
 NC - Valve normally closed (as standard)
 NO - Valve normally open (as option)

Direct pressure controlled valve.
 The valve seat is opened against a spring force via the control medium.

■ Valve for clean, gaseous and liquid media

TECHNICAL SPECIFICATIONS

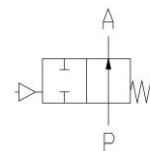
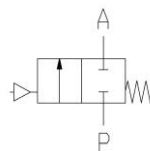
Type of control	Direct pressure operated
Design	Poppet design
Connection	Sleeve connection G1/4 - G1/2 DIN ISO 228/1 (BSP) <small>Further connections like NPT on request</small>
Installation	Preferable with actuator upright
Pressure	0 - 16 bar (see table on page 2)
Medium	Clean, neutral gaseous and liquid media
Max. viscosity	600 mm ² /s
Temperature range	Medium: -10 °C / +80 °C Environment: -10 °C / +60 °C
Body material	Brass 2.0401 Stainless steel 1.4571 / 1.4581
Metallic inner parts	Brass and st. steel
Sealing	NBR, FKM, EPDM
Pilot pressure	4 - 10 bar
Pilot medium	Clean, neutral gaseous <small>Other pilot media on request</small>

VALVE FEATURES

- No pressure difference required
- High life time
- Simple compact valve design
- Reliable and sturdy sealing elements
- Long-term availability of spare parts

FUNCTION

NC – non pressurized closed NO – non pressurized open



CERTIFICATES



Pilot valve **2/131-31-1702-C182**



3/2-way direct operated, NC
 G1/8, orifice 1.5mm, 0-8 bar
 Aluminum / Stainless steel / FKM
 with Cnomo-coil as well as with
 integrated screw connection for
 easy assembly

Pilot valve **A7231/1002/....**



3/2-way direct operated, NC
 G1/8, orifice 1.5mm, 0-8 bar
 brass / st. steel / FKM

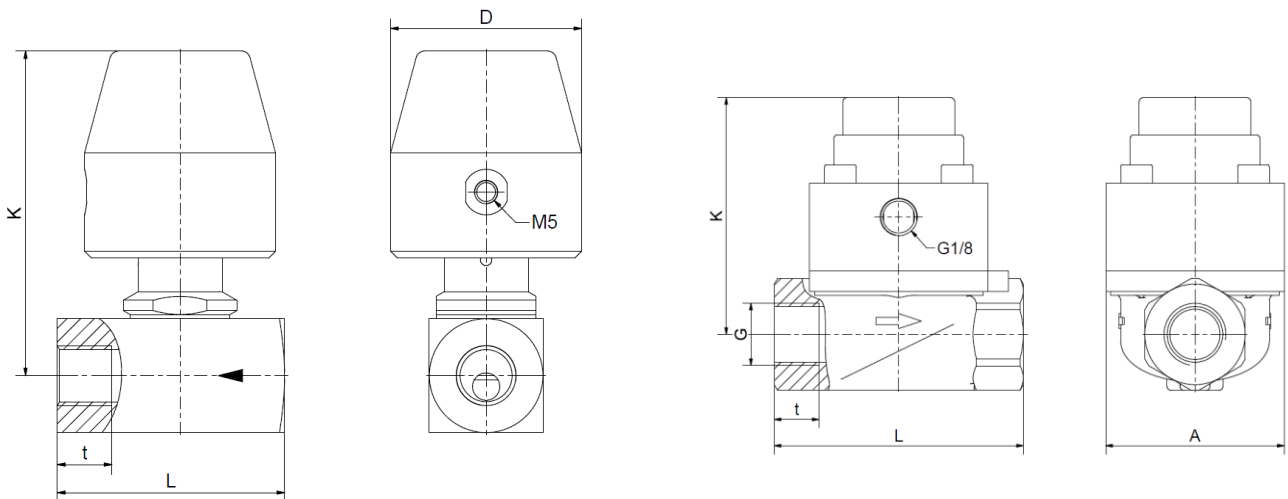
TECHNICAL FEATURES

G	Seat Ø mm	Kv-value m³/h	Standard type	max. pressure with actuator		
				7.03	7.53	8.03 (NO)
1/4	6	0,75	.6347/..01/7003	0-16	0-16	0-16
3/8	8	0,9	.6358/..01/7003	0-16	0-16	0-16
1/2	10	1,7	.6369/..01/7003	0-16	0-16	0-12

G	Seat Ø mm	Kv-value m³/h	Standard type	max. pressure with actuator		
				7.03	7.53	8.03 (NO)
1/4	13	1,8	.6321/1001/7003	0-10	0-10	0-10
	13,5	1,8	.6321/0801/7503	0-10	0-10	0-10
3/8	13	3,6	.6322/1001/7003	0-10	0-10	0-10
	13,5	3,6	.6322/0801/7503	0-10	0-10	0-10
1/2	13	3,9	.6323/1001/7003	0-10	0-10	0-10
	13,5	3,9	.6323/0801/7503	0-10	0-10	0-10

Type 6347 / 6358 / 6369

Typ 6321-23 Brass and st. steel



Actuator	7.03								
Type	6347	6358	6369	6321/10.	6322/10.	6323/10.	6321/08.	6322/08.	6323/08.
G	1/4	3/8	1/2	1/4	3/8	1/2	1/4	3/8	1/2
A	-	-	-	48	48	48	48	48	48
D	42	42	42	-	-	-	-	-	-
K	72	81	81	64	64	64	64	64	64
L	50	54	54	67	67	67	67	67	67
t	12	12,5	13	12	12	13	14	12,5	12,5
kg	0,6	0,7	0,6	0,8	0,8	0,7	0,7	0,7	0,6



INFORMATION

- It is imperative to observe the installation and safety instructions in our operating and service manuals.
- Required ordering information: valve type, function NC/NO, pressure range, connection, nominal width, medium, flow rate, medium and ambient temperatures, connection voltage.
- **For information on the heating and performance of solenoid coils, refer to the corresponding "Coils" data sheet.**
- **Detailed production-specific drawings and other technical information will be made available when an order is placed.**

PLEASE NOTE

Each individual application decides which valve type is required, the main factor being the resistance of the materials to the operating medium. The correct selection of materials requires knowledge of the concentration, temperature and degree of contamination of the medium. Other criteria include the operating pressure and max. volumetric flow, since, in addition to high temperatures, high pressures and high flow rates must also be taken into account when selecting the materials.

All materials used for our valves, be it housing, seals or magnets, will be carefully selected in view of the different application areas. Any information given is non-binding and serves for orientation only. No claims under warranty can be derived therefrom.

ORDERING CODE

Type	Connection		Body	Sealing		Actuator			Option
. 6 3	2 3	/	1 0	0 1	/	7 0	0 3	-	x x
47	G 1/4 6 mm		08	St.steel 1.4571		7 .	Closed wo/ press.		
58	G 3/8 8 mm		10	Brass 2.0402		8 .	Open wo/ press.		
69	G 1/2 10 mm								
21	G 1/4			01 NBR		. 0	Standard-Actuat.		
22	G 3/8			02 FKM		. 3	Actuat.-St.steel		
23	G 1/2			06 EPDM		. 5	Actuat.-nickel-pl.		
						. 3	30 mm		