



2/2-way pressure controlled valve
 NC - Valve normally closed (as standard)
 NO - Valve normally open (as option)

Direct pressure controlled valve.
 The valve seat is opened against a spring force via the control medium.
 In standard (NC) the valve closes with spring power.

■ Valve for extended temperature range

TECHNICAL SPECIFICATIONS

Type of control	Direct pressure operated
Design	Poppet design
Connection	Sleeve connection G 1/2 - G 3 DIN ISO 228/1 (BSP)
Installation	Actuator upright or lateral
Pressure	0 - 40 bar (see table on page 2)
Medium	Clean, neutral gaseous and liquid media
Max. viscosity	600 mm ² /s
Temperature range	Medium: -40 °C / +250 °C Environment: -10 °C / +60 °C
Body material	Red brass RG5 Stainless steel 1.4408 / 1.4571
Metallic inner parts	Red brass / Brass and Stainless steel
Sealing	PEEK
Pilot pressure	4 - 10 bar max. pressure range at min. 6 bar
Pilot medium	Clean, neutral gaseous Other pilot media on request

Pilot valve **2/131-31-1702-C182**



3/2-way direct operated, NC
 G1/8, orifice 1.5mm, 0-8 bar
 Aluminum / Stainless steel / FKM
 with Cnomo-coil as well as with
 integrated screw connection for
 easy assembly

Pilot valve **A7231/1002/....**



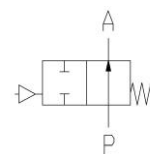
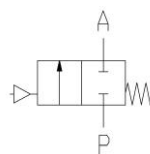
3/2-way direct operated, NC
 G1/8, orifice 1.5mm, 0-8 bar
 brass / st.steel / FKM

VALVE FEATURES

- For media temperatures up to +250 °C
- No pressure difference is required
- High life time
- Simple compact valve design
- High-quality materials
- Reliable and sturdy sealing elements

FUNCTION

NC – non pressurized closed NO – non pressurized open



CERTIFICATES

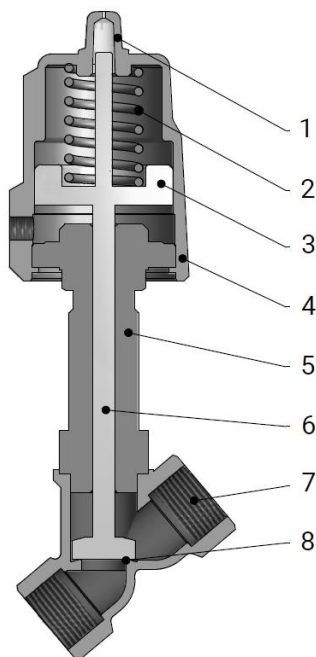


Special design available for temperatures up to +300 °C.
 Specifications and drawings on request.

TECHNICAL FEATURES

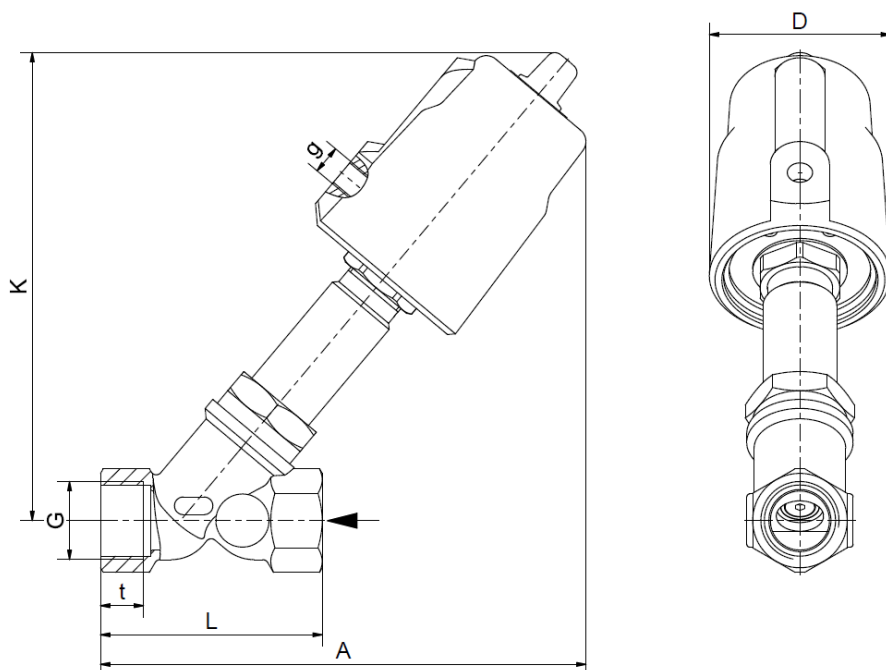
				max. pressure with actuator					
G	Seat Ø mm	Kv-value m³/h	Standard type	7.05		7.08		7.13	
				RG5	St. steel	RG5 Brass	St. steel	RG5 Brass	St. steel
1/2	13	4,6	.6323/..15/7...-DT	0-16	0-40	-	-	-	-
3/4	18	6,4	.6324/..15/7...-DT	0-16	0-20	-	0-40	-	-
1	24	8,4	.6325/..15/7...-DT	0-16	0-16	0-16	0-25	-	0-40
1 1/4	31	21,5	.6326/..15/7...-DT	0-9	0-9	0-16	0-25	-	0-40
1 1/2	35	27,0	.6327/..15/7...-DT	0-7	0-7	0-16	0-20	0-16	0-40
2	45	45,0	.6328/..15/7...-DT	-	-	0-11	0-12	0-16	0-20
2 1/2	63	82,0	.6329/..15/7...-DT	-	-	-	-	0-10	-
3	76	125,0	.6330/..15/7...-DT	-	-	-	-	0-10	-

				Max. pressure for version closing against the media pressure					
G	Seat Ø mm	Kv-value m³/h	Standard type	7.15 / 7.55		7.58		7.63	
				RG5	St. steel	RG5	St. steel	RG5 Brass	St. steel
1/2	13	4,6	.6323/..15/7...-DT	0-16	0-40	-	-	-	-
3/4	18	6,4	.6324/..15/7...-DT	0-16	0-20	-	0-25	-	-
1	24	8,4	.6325/..15/7...-DT	0-8	0-10	0-16	0-22	-	0-40
1 1/4	31	21,5	.6326/..15/7...-DT	0-7	0-7	0-12	0-10	0-16	0-40
1 1/2	35	27,0	.6327/..15/7...-DT	0-6	0-6	0-8	0-8	0-16	0-30
2	45	45,0	.6328/..15/7...-DT	-	-	0-5	0-5	0-16	0-20
2 1/2	63	82,0	.6329/..15/7...-DT	-	-	-	-	0-8,5	-
3	76	125,0	.6330/..15/7...-DT	-	-	-	-	0-5	-



Description	
1	Position indicator
2	Spring
3	Piston
4	Cylinder
5	Distancing
6	Spindle
7	Valve body
8	Valve seat

DIMENSIONS



Actuator	7.05					7.08		
Type	6323	6324	6325	6326	6327	6324	6325	6326
G	1/2	3/4	1	1 1/4	1 1/2	3/4	1	1 1/4
A	158	165	170	188 (195)	200	(193)	208	217
D	62	62	62	62	62	(94)	94	94
K	158	161	164	180	187	(193)	208	217
L	65	75	90	97 (110)	120	(75)	80	97
g	1/8	1/8	1/8	1/8	1/8	(1/8)	1/8	1/8
t	12	14,5 (13)	15	12,5 (17)	19	(13)	10,5	12,5
kg	1,4	1,5	1,9	2,4	2,7	(1,7)	2,0	2,5

The values in brackets apply to the stainless steel version.

Actuator	7.08		7.13					
Type	6327	6328	6325	6326	6327	6328	6329	6330
G	1 1/2	2	1	1 1/4	1 1/2	2	2 1/2	3
A	224	235	on req.	(275)	280	385	330	350
D	94	94	(140)	(140)	140	140	140	140
K	218	229	on req.	(275)	280	285	300	305
L	107	124	(80)	(110)	107	124	178	195
g	1/8	1/8	(1/4)	(1/4)	1/4	1/4	1/4	1/4
t	14,5	16,5	(10,5)	(17)	14,5	16,5	28	28
kg	2,9	3,2	on req.	(5,0)	5,5	6,5	8,0	9,5

The values in brackets apply to the stainless steel version.



INFORMATION

- It is imperative to observe the installation and safety instructions in our operating and service manuals.
- Required ordering information: valve type, function NC/NO, pressure range, connection, nominal width, medium, flow rate, medium and ambient temperatures, connection voltage.
- **For information on the heating and performance of solenoid coils, refer to the corresponding "Coils" data sheet.**
- **Detailed production-specific drawings and other technical information will be made available when an order is placed.**

PLEASE NOTE

Each individual application decides which valve type is required, the main factor being the resistance of the materials to the operating medium. The correct selection of materials requires knowledge of the concentration, temperature and degree of contamination of the medium. Other criteria include the operating pressure and max. volumetric flow, since, in addition to high temperatures, high pressures and high flow rates must also be taken into account when selecting the materials.

All materials used for our valves, be it housing, seals or magnets, will be carefully selected in view of the different application areas. Any information given is non-binding and serves for orientation only. No claims under warranty can be derived therefrom.

ORDERING CODE

Type	Connection		Body	Sealing		Actuator		Option	
. 6 3	2 3	/	1 1	1 5	/	7 1	0 5	-	D T
23	G 1/2		08	St.steel 1.4408		7 .	Closed wo/ press.	DT	+250 °C
24	G 3/4		10	Brass 2.0402		8 .	Open wo/ press.		
25	G 1		11	Red brass RG5					
26	G 5/4					. 1	Standard-Actuat.		
27	G 6/4		15	PEEK		. 3	Actuator-St.steel		
28	G 2					. 5	Actuator-nickel-pl.		
29	G 2 1/2								
30	G 3					. 5	50 mm		
						. 8	80 mm		
						. 3	125 mm		