



2/2-way pressure controlled valve
NC - Valve normally closed

Pilot operated diaphragm valve
 The mentioned minimum pressure difference between inlet and outlet is necessary for proper operation.
 In standard (NC) the valve closes with spring power.

■ **Valve for clean, gaseous and liquid media**

TECHNICAL SPECIFICATIONS

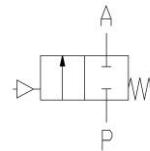
Type of control	Pilot operated, differential pressure necessary
Design	Seat valve with diaphragm seal
Connection	Sleeve connection G 1/4 - G 2 DIN ISO 228/1 (BSP)
Installation	Actuator upright or lateral
Pressure	0,3 - 20 bar (see table on page 2)
Medium	Clean, neutral gaseous and liquid media
Max. viscosity	22 mm ² /s
Temperature range	Medium: -10 °C / +80 °C Environment: -10 °C / +60 °C
Body material	Brass 2.0402 Stainless steel 1.4581
Metallic inner parts	Brass and st. steel
Sealing	NBR, FKM, EPDM
Pilot pressure	according to the operating pressure max. +0,5 bar more than operating pressure
Pilot medium	clean and neutral

VALVE FEATURES

- Pressure difference is required
- High life time
- Simple compact valve design
- High-quality materials
- Reliable and sturdy sealing elements
- Long-term availability of spare parts

FUNCTION

NC – non pressurized closed



CERTIFICATES



Pilot valve **A5231/1002/182**



suitable for medium-controlled version

 2/2-way direct-controlled, NC
 G1/8, Seat Ø mm1,5mm, 0-30 bar
 brass / st.steel / FKM

Pilot valve **A7231/1002/012**

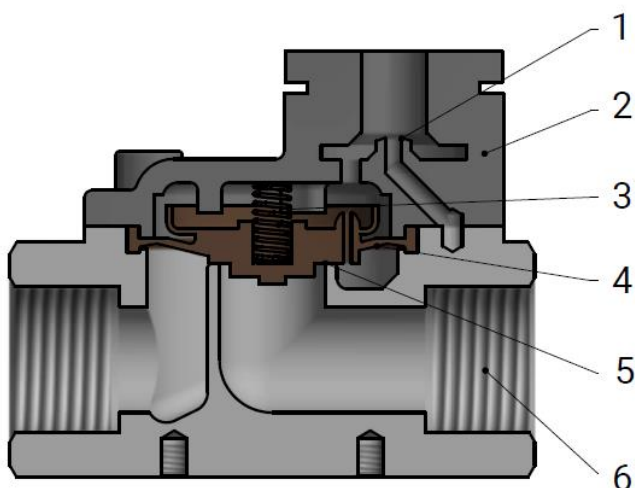


suitable for external medium (e.g. air) controlled version

 3/2-way direct operated, NC
 G1/8, Seat Ø mm1,5mm, 0-25 bar
 brass / st.steel / FKM

TECHNICAL FEATURES

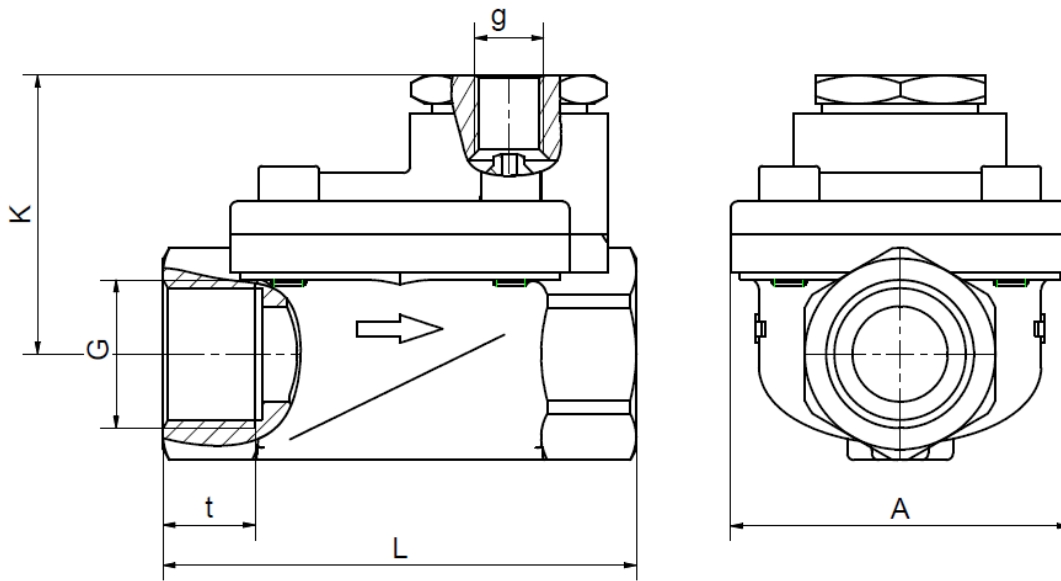
G	Seat Ø mm	Kv-value m ³ /h	Standard type	max. pressure with actuator	
				6 (same medium)	7 (external medium)
1/4	13,5	1,6	.6021/1001-	0,3-20	
3/8	13,5	3,3	.6022/1001-	0,3-20	
1/2	13,5	3,8	.6023/1001-	0,3-20	
3/4	27,5	11,0	.6024/1001-	0,3-20	
1	27,5	13,0	.6025/1001-	0,3-20	
1 1/4	40,0	30,0	.6026/1001-	0,3-16	
1 1/2	40,0	32,0	.6027/1001-	0,3-16	
2	50,0	36,0	.6028/1001-	0,3-16	



Description

- | | |
|---|------------|
| 1 | Spring |
| 2 | Bonnet |
| 3 | Spring |
| 4 | Diaphragm |
| 5 | Valve seat |
| 6 | Valve body |

DIMENSIONS



Actuator	6 / 7							
Type	.6021	.6022	.6023	.6024	.6025	.6026	.6027	.6028
G	1/4	3/8	1/2	3/4	1	1 1/4	1 1/2	2
g	1/8	1/8	1/8	1/8	1/8	1/8	1/8	1/8
A	48	48	48	70	70	96	96	112
K	39,5	39,5	39,5	52	52	61	61	76
L	67	67	67	96	96	140	140	168
t	12	12	13	16	16	22	22	22
kg	0,5	0,5	0,45	1,3	1,2	2,8	2,55	3,8

INFORMATION

- It is imperative to observe the installation and safety instructions in our operating and service manuals.
- Required ordering information: valve type, function NC/NO, pressure range, connection, nominal width, medium, flow rate, medium and ambient temperatures, connection voltage.
- **For information on the heating and performance of solenoid coils, refer to the corresponding "Coils" data sheet.**
- **Detailed production-specific drawings and other technical information will be made available when an order is placed.**

PLEASE NOTE

Each individual application decides which valve type is required, the main factor being the resistance of the materials to the operating medium. The correct selection of materials requires knowledge of the concentration, temperature and degree of contamination of the medium. Other criteria include the operating pressure and max. volumetric flow, since, in addition to high temperatures, high pressures and high flow rates must also be taken into account when selecting the materials.

All materials used for our valves, be it housing, seals or magnets, will be carefully selected in view of the different application areas. Any information given is non-binding and serves for orientation only. No claims under warranty can be derived therefrom.

ORDERING CODE

Type	Connection		Body	Sealing		Steuerung
. 6 0	2 3	/	1 0	0 1	-	7

21	G 1/4
22	G 3/8
23	G 1/2
24	G 3/4
25	G 1
26	G 1 1/4
27	G 1 1/2
28	G 2

08	St.steel 1.4581
10	Brass 2.0402

01	NBR
02	FKM
06	EPDM

6	by same fluid
7	by seperate fluid