



2/2-way solenoid valve

NC - Valve normally closed (as standard)

NO - Valve normally open (as option)

Direct controlled valve.

No differential pressure is necessary for operation. When energized, the valve seat is opened directly.

In standard (NC) the valve closes with spring power.

■ Solenoid valve for gaseous and liquid media

TECHNICAL SPECIFICATIONS

Type of control	Direct operated, no pressure difference necessary	
Design	Poppet design	
Connection	Flanges DN15 - DN80 EN 1092-1 Form B1/B2	
Installation	Actuator upright	
Pressure	0 - 3 bar (see table on page 2)	
Medium	Clean, neutral gaseous and liquid media	
max. viscosity	22 mm ² /s	
Temperature range	Medium: -10 °C / +80 °C Environment: -10 °C / +50 °C <small>Taking into account other influencing parameters</small>	
Body material	Stainless steel 1.4408	
Metallic inner parts	Stainless steel	
Sealing	NBR, FKM, EPDM	
Supply voltage	AC~ 24V, 110V, 230V DC= 12V, 24V <small>Other supply voltages on request</small>	
Voltage tolerance	-10% / +10%	
Power consumption	.012 = 18 Watt	.148 = 10 Watt ☹
	.802 = 24 Watt	.808 = 24 Watt ☹
	.322 = 30 Watt	.328 = 24 Watt ☹
	.242 = 46 Watt	.248 = 30 Watt ☹
	.272 = 100 Watt	.278 = 47 Watt ☹
	.352 = 150 Watt	.358 = 75 Watt ☹
Protection class	IP65 according to DIN 60529	
Duty factor	100% ED-VDE 0580	
Connection type	Device plug DIN 43650, terminal box	
Ex-proof	acc. to 2014/34/EU (ATEX)	

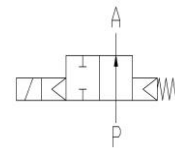
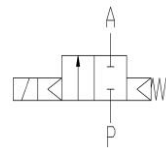
VALVE FEATURES

- No pressure difference required
- High life time
- Simple compact valve design
- Reliable and sturdy sealing elements
- Long-term availability of spare parts

FUNCTION

NC – non energized closed

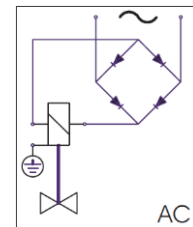
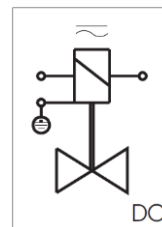
NO – non-energized open



CONNECTION DIAGRAM

For AC/DC coils

For DC coils
w/ integr. rectifier




CERTIFICATES



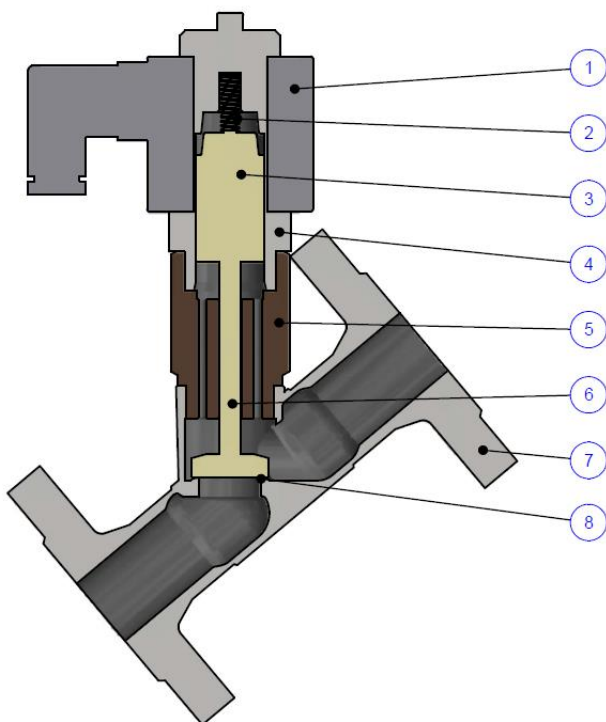
TECHNICAL FEATURES

DN	Seat Ø mm	Kv-value m³/h	Standard type	max. pressure for coils					
				.012-FL	.802-FL	.322-FL	.242-FL	.272-FL	.352-FL
15	12,5	3,2	.4823/0801/	0-0,5	0-1	0-3	-	-	-
20	18	4,9	.4824/0801/	0-0,1	0-0,4	0-1	0-2	-	-
25	24	8,5	.4825/0801/	-	0-0,2	0-0,5	0-1	0-2	-
32	29	15,0	.4826/0801/	-	-	0-0,3	0-0,5	0-1	-
40	35	20,0	.4827/0801/	-	-	-	0-0,3	0-0,5	-
50	45	30,0	.4828/0801/	-	-	-	0-0,15	0-0,3	0-0,8
65	62	58,0	.4829/0801/	-	-	-	-	0-0,15	0-0,4
80	75	60,0	.4830/0801/	-	-	-	-	0-0,1	0-0,3

The flow rate mentioned in the table applies to the strongest coil.

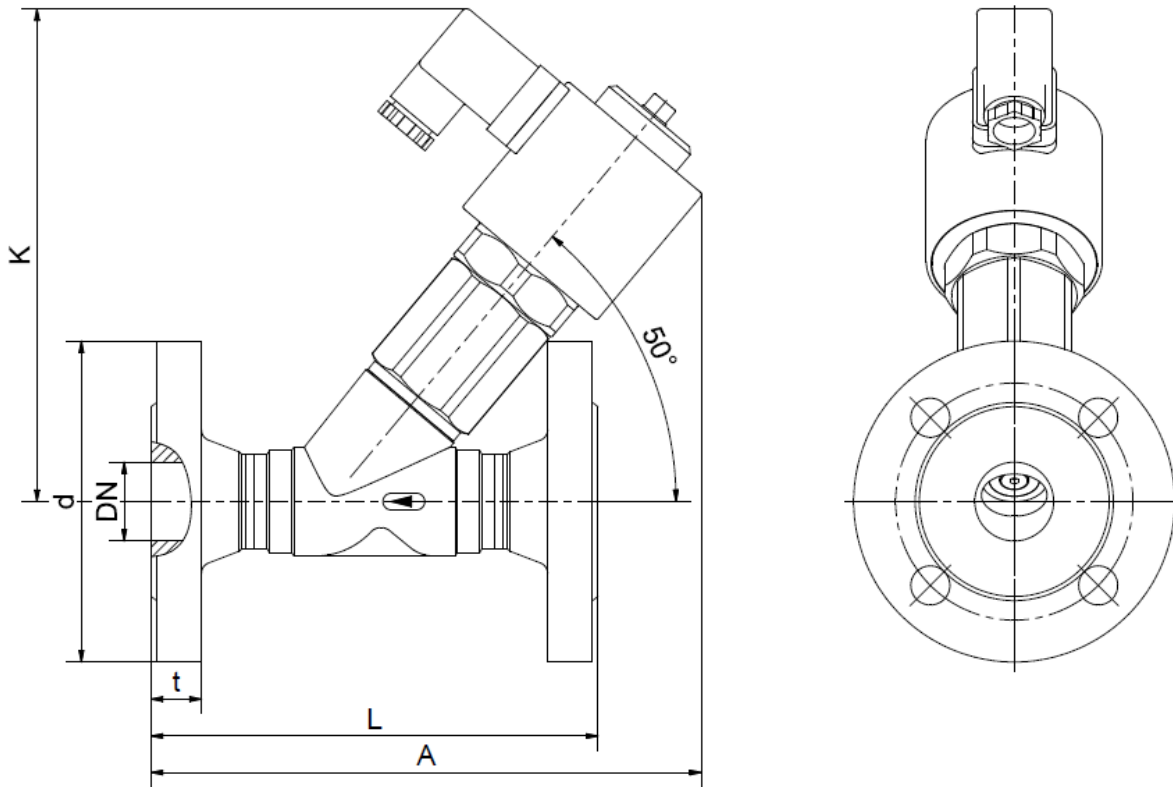
DN	Seat Ø mm	Kv-value m³/h	Standard type	max. pressure for coils ATEX 					
				.148-FL	.808-FL	.328-FL	.248-FL	.278-FL	.358-FL
15	12,5	3,2	.4823/0801/	0-0,2	0-1	0-1	-	-	-
20	18	4,9	.4824/0801/	-	0-0,4	0-0,5	0-1,2	-	-
25	24	8,5	.4825/0801/	-	0-0,2	0-0,5	0-0,7	0-1	-
32	29	15,0	.4826/0801/	-	-	0-0,2	0-0,3	0-0,5	-
40	35	20,0	.4827/0801/	-	-	-	0-0,2	0-0,3	-
50	45	30,0	.4828/0801/	-	-	-	-	0-0,2	0-0,4
65	62	58,0	.4829/0801/	-	-	-	-	-	0-0,15
80	75	60,0	.4830/0801/	-	-	-	-	-	0-0,15

The flow rate mentioned in the table applies to the strongest coil.



Description	
1	Solenoid coil
2	Spring
3	Plunger
4	Tube
5	Spacer
6	Spindle
7	Valve body
8	Valve seat

DIMENSIONS



Coil	.012 / .148*		.802 / .808*			.322 / .328*				.242 / .248		
Type	.4823	.4824	.4823	.4824	.4825	.4823	.4824	.4825	.4826	.4824	.4825	.4826
DN	15	20	15	20	25	15	20	25	32	20	25	32
A	150	150	178	187	187	194	204	198	210	228	232	245
C	61	61	70	70	70	77	77	77	77	93	93	93
d	95	105	95	105	115	95	105	115	140	105	115	140
K	135	120	167	169	165	185	187	177	185	220	223	233
L	130	150	130	150	160	130	150	160	180	150	160	180
t	16	18	16	18	18	16	18	18	18	18	18	18
kg	2,3	3,1	2,8	3,5	4,1	3,5	4,3	5,1	6,0	5,8	6,6	8,0

* Differing dimension "K" for ATEX-coils

Coil	.242 / .248		.272 / .278					.352 / .358			
Type	.4827	.4828	.4825	.4826	.4827	.4828	.4829*	.4830*	.4828	.4829*	.4830*
DN	40	50	25	32	40	50	65	80	50	65	80
A	240	256	262	275	287	290	-	-	on req.	-	-
C	93	93	107	107	107	107	107	107	127	127	127
d	150	165	115	140	150	165	185	200	165	185	200
K	215	223	250	260	265	255	on req.	on req.	on req.	on req.	on req.
L	200	230	160	180	200	230	290	310	230	290	310
t	18	20	18	18	18	20	22	24	20	22	24
kg	9,0	11,0	10,2	11,7	12,7	14,7	on req.	on req.	on req.	on req.	on req.

* .4829 and .4830 with straight seated body design



INFORMATION

- It is imperative to observe the installation and safety instructions in our operating and service manuals.
- Required ordering information: valve type, function NC/NO, pressure range, connection, nominal width, medium, flow rate, medium and ambient temperatures, connection voltage.
- **For information on the heating and performance of solenoid coils, refer to the corresponding "Coils" data sheet.**
- **Detailed production-specific drawings and other technical information will be made available when an order is placed.**

PLEASE NOTE

Each individual application decides which valve type is required, the main factor being the resistance of the materials to the operating medium. The correct selection of materials requires knowledge of the concentration, temperature and degree of contamination of the medium. Other criteria include the operating pressure and max. volumetric flow, since, in addition to high temperatures, high pressures and high flow rates must also be taken into account when selecting the materials.

All materials used for our valves, be it housing, seals or magnets, will be carefully selected in view of the different application areas. Any information given is non-binding and serves for orientation only. No claims under warranty can be derived therefrom.

ORDERING CODE

Type	Connection		Body	Sealing		Coil		Option	
. 4 8	2 5	/	0 8	0 1	/	.	2 4	2 -	FL

23	DN15
24	DN20
25	DN25
26	DN32
27	DN40
28	DN50
29	DN65
30	DN80

08	St.steel 1.4408
01	NBR
02	FKM
04	PTFE
06	EPDM

01	18,5 W
14	10 W
80	24 W
32	30 W
24	46 W
27	100 W
35	150 W

2	Standard IP65
8	2014/34/EU (ATEX)

FL	DIN Flanges
AF	ANSI Flanges