



2/2-way solenoid valve  
 NC - Valve normally closed (as standard)  
 NO - Valve normally open (as option)

Force-pilot operated piston valve  
 No differential pressure is necessary for operation.  
 In standard (NC) the valve closes with spring power.

■ Solenoid valve for extended temperature range

## TECHNICAL SPECIFICATIONS

Type of control	Force-pilot operated, no pressure difference necessary
Design	Piston design
Connection	Flanges DN15 - DN50 EN 1092-1 Form B1/B2
Installation	Actuator upright
Pressure	0 - 40 bar (see table on page 2)
Medium	Clean, neutral gaseous and liquid media
Max. viscosity	22 mm <sup>2</sup> /s
Temperature range	Medium: -40 °C / +200 °C Environment: -40 °C / +50 °C Taking into account other influencing parameters
Body material	Cast iron EN-GJL-250 Cast steel GP240 GH Stainless steel 1.4581
Metallic inner parts	Brass and st. steel
Sealing	PTFE
Supply voltage	AC~ 24V, 110V, 230V via external rectifier (included in delivery) DC= 12V, 24V Other supply voltages on request
Voltage tolerance	-10% / +10%
Power consumption	T802 = 18 Watt T322 = 21 Watt T242 = 26 Watt T272 = 60 Watt T352 = 80 Watt
Protection class	IP65 according to DIN 60529
Duty factor	100% ED-VDE 0580
Connection type	terminal box

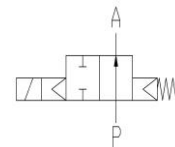
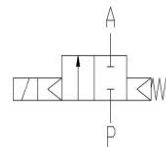
## VALVE FEATURES

- For media temperatures up to +200 °C
- No pressure difference is required
- High life time
- High-quality materials
- Reliable and sturdy sealing elements

## FUNCTION

NC – non energized closed

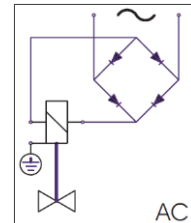
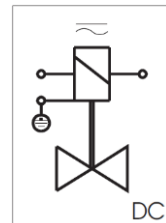
NO – non-energized open



## CONNECTION DIAGRAM

For AC/DC coils

For DC coils  
w/ integr. rectifier



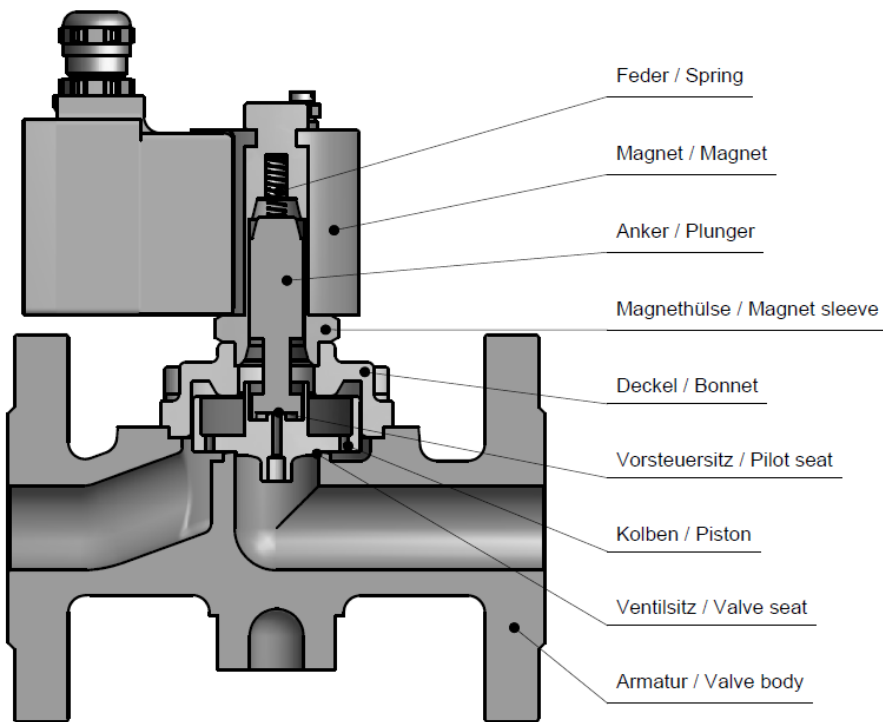
## CERTIFICATES



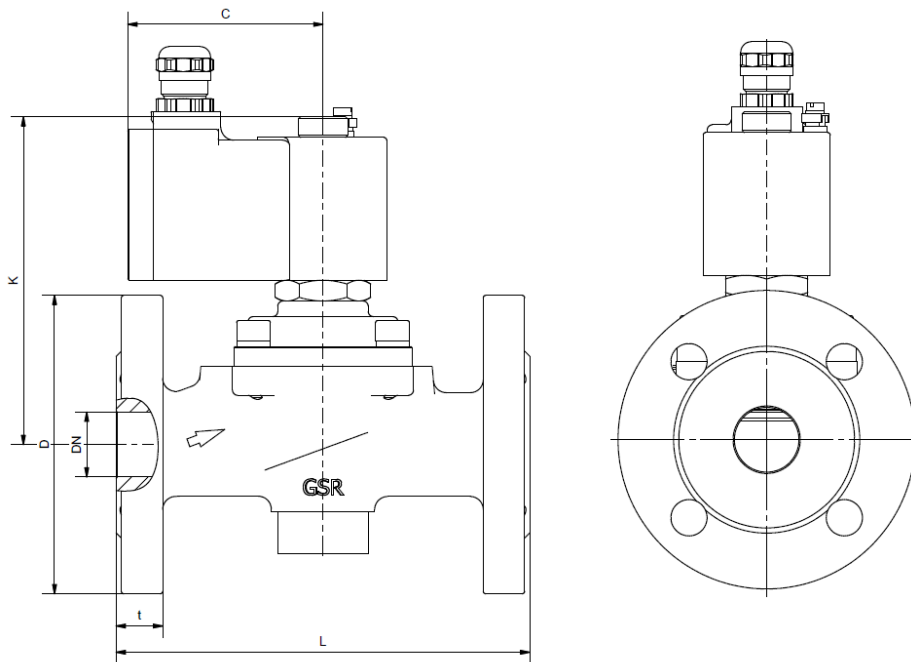
# TECHNICAL FEATURES

DN	Seat Ø mm	Kv-value m <sup>3</sup> /h	Standard type	max. pressure for coils				
				T802	T322	T242	T272	T352
15	15	5,0	.3701/..04/	0-20	0-40	-	-	-
20	20	11,0	.3702/..04/	0-13	0-25	0-40	-	-
25	25	13,0	.3703/..04/	0-13	0-25	0-40	-	-
32	32	28,0	.3704/..04/	-	0-6	0-20	0-40	-
40	40	30,0	.3705/..04/	-	0-6	0-20	0-40	-
50	50	46,0	.3706/..04/	-	-	0-6	0-25	0-40

The flow rate mentioned in the table applies to the strongest coil.  
 Max. Pressure range 16 bar with EN-GJL-250 fitting PN16.



## DIMENSIONS



Coil	T802			T322				
	3701	3702	3703	3701	3702	3703	3704	3705
Type	3701	3702	3703	3701	3702	3703	3704	3705
DN	15	20	25	15	20	25	32	40
C	76	76	76	83	83	83	83	83
D	95	105	115	95	105	115	140	150
K	115	130	150	150	145	145	160	160
L	130	150	160	130	150	160	180	200
t	14	16	16	14	16	16	16	16
kg	3,5	4,5	5,5	3,0	5,0	5,5	8,0	8,5

Coil	T242					T272			T352
	3702	3703	3704	3705	3706	3704	3705	3706	3706
Type	3702	3703	3704	3705	3706	3704	3705	3706	3706
DN	20	25	32	40	50	32	40	50	50
C	93	93	93	93	93	107	107	107	127
D	105	115	140	150	165	140	150	165	165
K	185	190	200	200	200	230	230	240	319
L	150	160	180	200	230	180	200	230	230
t	16	16	16	16	18	16	16	18	18
kg	7,5	7,5	10,5	11,0	14,0	15,0	15,5	18,5	29,6

## INFORMATION

- It is imperative to observe the installation and safety instructions in our operating and service manuals.
- Required ordering information: valve type, function NC/NO, pressure range, connection, nominal width, medium, flow rate, medium and ambient temperatures, connection voltage.
- **For information on the heating and performance of solenoid coils, refer to the corresponding "Coils" data sheet.**
- **Detailed production-specific drawings and other technical information will be made available when an order is placed.**

## PLEASE NOTE

Each individual application decides which valve type is required, the main factor being the resistance of the materials to the operating medium. The correct selection of materials requires knowledge of the concentration, temperature and degree of contamination of the medium. Other criteria include the operating pressure and max. volumetric flow, since, in addition to high temperatures, high pressures and high flow rates must also be taken into account when selecting the materials.

**All materials used for our valves, be it housing, seals or magnets, will be carefully selected in view of the different application areas. Any information given is non-binding and serves for orientation only. No claims under warranty can be derived therefrom.**

## ORDERING CODE

Type	Connect.		Body	Sealing		Coil		Option	
<b>. 3 7</b>	<b>0 6</b>	<b>/</b>	<b>0 4</b>	<b>0 4</b>	<b>/</b>	<b>T</b>	<b>2 4</b>	<b>2 -</b>	<b>T H</b>

01	DN15
02	DN20
03	DN25
04	DN32
05	DN40
06	DN50

04	EN-GJL-250
05	GP240 GH
08	St.steel 1.4581
04	PTFE

80	18 W
32	21 W
24	26 W
27	60 W
35	80 W

2	Standard IP65
---	---------------

TH	+180 °C
EL	+200 °C
NW	normally open