



2/2-way solenoid valve

NC - Valve normally closed (as standard)

NO - Valve normally open (as option)

Force-pilot operated piston valve

No differential pressure is necessary for operation.

In standard (NC) the valve closes with spring power.

■ Solenoid valve for extended temperature range

TECHNICAL SPECIFICATIONS

Type of control	Force-pilot operated, no pressure difference necessary
Design	Piston design
Connection	Flanges DN15 - DN50 EN 1092-1 Form B1/B2
Installation	Actuator upright
Pressure	0 - 40 bar (see table on page 2)
Medium	Clean, neutral gaseous and liquid media
Max. viscosity	22 mm ² /s
Temperature range	Medium: -40 °C / +250 °C Environment: -40 °C / +50 °C Taking into account other influencing parameters
Body material	Cast steel GP240 GH Stainless steel 1.4581
Metallic inner parts	Stainless steel
Sealing	PEEK
Supply voltage	AC~ 24V, 110V, 230V via external rectifier (included in delivery) DC= 12V, 24V Other supply voltages on request
Voltage tolerance	-10% / +10%
Power consumption	T322 = 21 Watt T242 = 26 Watt T272 = 60 Watt
Protection class	IP65 according to DIN 60529
Duty factor	100% ED-VDE 0580
Connection type	terminal box

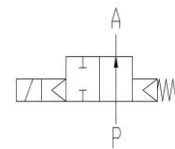
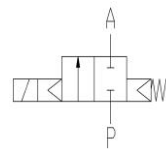
VALVE FEATURES

- For media temperatures up to +250 °C
- No pressure difference is required
- High life time
- Simple compact valve design
- High-quality materials
- Reliable and sturdy sealing elements

FUNCTION

NC – non energized closed

NO – non-energized open

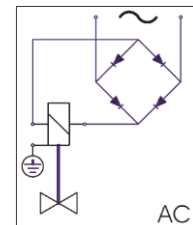
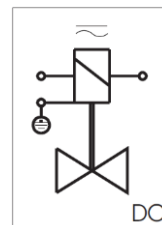


CONNECTION DIAGRAM

For AC/DC coils

For DC coils

w/ integr. rectifier



CERTIFICATES

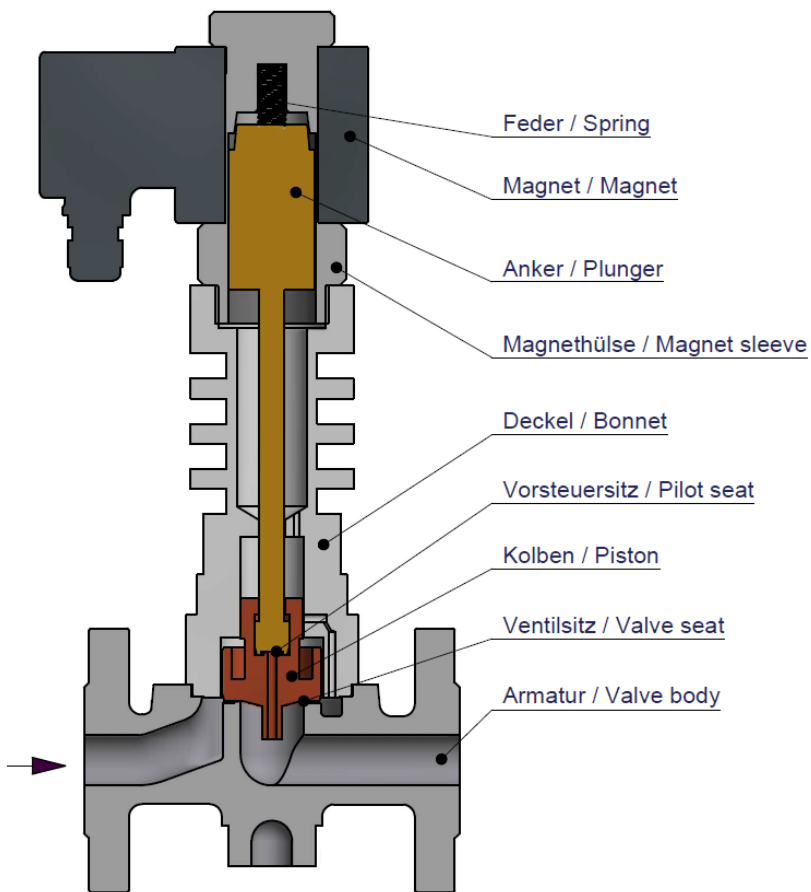


TECHNICAL FEATURES

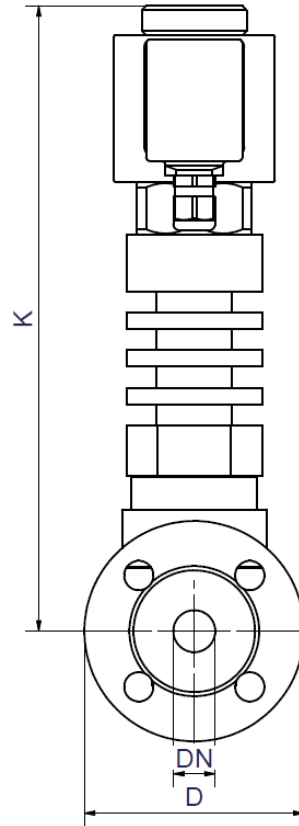
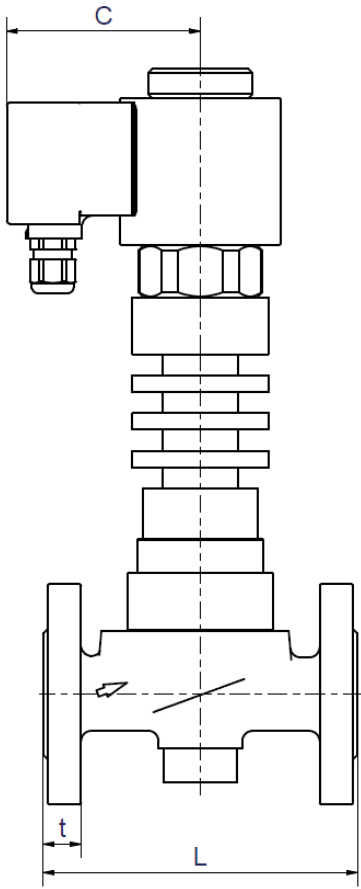
DN	Kv-value m ³ /h	Standard type	max. pressure for coils		
			T322	T242	T272
15	5,0	.3701/..15/....-DT	0-10	0-32*	-
20	11,0	.3702/..15/....-DT	0-6	0-25	-
25	13,0	.3703/..15/....-DT	0-6	0-25	-
32	24,0	.3704/..15/....-DT	-	0-6	0-25
40	27,0	.3705/..15/....-DT	-	0-6	0-25
50	42,0	.3706/..15/....-DT	-	0-6	0-25

The flow rate mentioned in the table applies to the strongest coil.

*max. 40 bar with special housing on request



DIMENSIONS



Coil	T322			T242		
Type	.3701	.3702	.3703	.3701	.3702	.3703
DN	15	20	25	15	20	25
C	83	83	83	93	93	93
D	95	105	115	95	105	115
K	256	250	265	295	298	283
L	130	150	160	130	150	160
t	16	18	18	16	18	18
kg	3,9	5,5	5,8	7,5	7,7	6,8

Coil	T242			T272		
Type	.3704	.3705	.3706	.3704	.3705	.3706
DN	32	40	50	32	40	50
C	93	93	93	107	107	107
D	140	150	165	140	150	165
K	299	299	299	335	335	358
L	180	200	230	180	200	230
t	18	18	20	18	18	20
kg	9,6	10,1	12,6	11,2	11,4	14,9



INFORMATION

- It is imperative to observe the installation and safety instructions in our operating and service manuals.
- Required ordering information: valve type, function NC/NO, pressure range, connection, nominal width, medium, flow rate, medium and ambient temperatures, connection voltage.
- **For information on the heating and performance of solenoid coils, refer to the corresponding "Coils" data sheet.**
- **Detailed production-specific drawings and other technical information will be made available when an order is placed.**

PLEASE NOTE

Each individual application decides which valve type is required, the main factor being the resistance of the materials to the operating medium. The correct selection of materials requires knowledge of the concentration, temperature and degree of contamination of the medium. Other criteria include the operating pressure and max. volumetric flow, since, in addition to high temperatures, high pressures and high flow rates must also be taken into account when selecting the materials.

All materials used for our valves, be it housing, seals or magnets, will be carefully selected in view of the different application areas. Any information given is non-binding and serves for orientation only. No claims under warranty can be derived therefrom.

ORDERING CODE

Type	Connect.		Body	Sealing		Coil		Option
. 3 7	0 6	/	0 8	1 5	/	T	2 7	2 - DT

01	DN15
02	DN20
03	DN25
04	DN32
05	DN40
06	DN50

05	GP240 GH
08	St.steel 1.4581
15	PEEK

32	21 W
24	26 W
27	60 W

2	Standard IP65
---	---------------

DT	+250 °C
DE	limit switch
DH	normally open