

# PUSH-IN FITTINGS

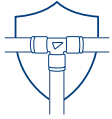




High performance fittings, easy to use



Strong but compact in order to ensure maximum assembling flexibility



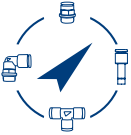
Optimized flow and guaranteed vacuum resistant



Four series that allow use in multiple sectors



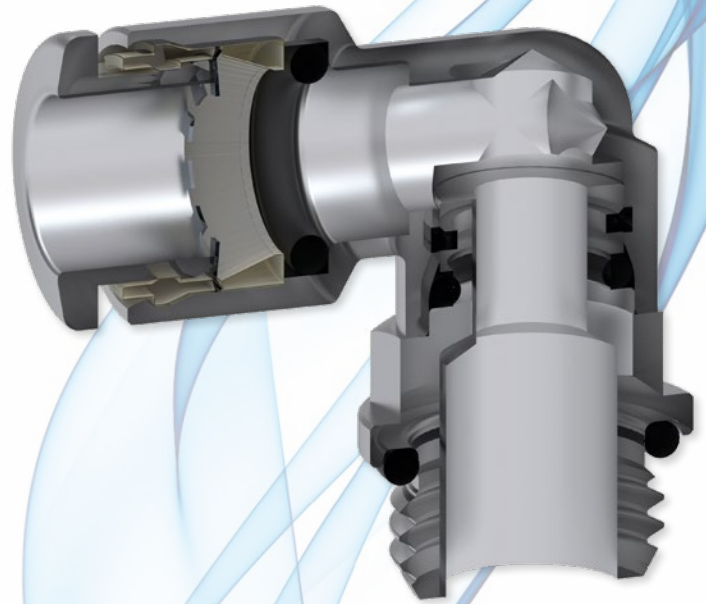
Excellent reliability and resistant thanks to the construction materials used



Complete range to facilitate assembly



Silicone free



**OTR SERIES:** Pneumatics and industrial automation.

**HFR SERIES:** Food sector and coffee machines.

**LFRP SERIES:** Food & Beverage, coffee machines, vending e water dispenser.

**XVR SERIES:** Food sector, food & beverage, coffee machines e vending.  
Perfect for aggressive environments and in critical working conditions.

## OTR SERIES



**Materials:** Nickel-plated brass

**Pressure:** from - 0,95 to 20 Bar

**Temperature:** from -20°C to 80°C

**Range:** from Ø4 to Ø12 / from R1/8" to R1/2"  
from Ø4 to Ø12 / from M5 to G1/2"

**Use:** Compressed air and vacuum

## HFR SERIES



**Materials:** TEA+ plated brass

**Pressure:** from - 0,95 to 20 Bar

**Temperature:** from -20°C to 150°C

**Range:** from Ø4 to Ø12 / from M5 to G1/2"

**Use:** Compressed air, vacuum, water and fluids suitable with the construction materials



## LFRP SERIES



**Materials:** Yellow brass CW510L

(lead 0.1% max without exceptions)

**Pressure:** from - 0,95 to 20 Bar

**Temperature:** from -20°C to 150°C

**Range:** from Ø4 to Ø8 / from M5 to G3/8"

**Use:** Compressed air, vacuum, water and fluids suitable with the construction materials



## XVR SERIES



**Materials:** Stainless steel AISI 316L

**Pressure:** from - 0,95 to 20 Bar

**Temperature:** from -20°C to 150°C

**Range:** from Ø4 to Ø12 / from R1/8" to R1/2"  
from Ø4 to Ø12 / from M5 to G1/2"

**Use:** Compressed air, vacuum, water and fluids suitable with the construction materials

